

IL-1R2 Recombinant Matched Antibody Pair, PBS Only

Catalog Number:MP01178-4

Capture Antibody Information

Catalog Number:

84269-1-PBS

Host:

Rabbit

Isotype:

IgG

Purification Method:

Protein A purification

Clone ID:

241530B4

Reactivity:

human

GenBank:

BC039031

Conjugate:

Unconjugated

Full name:

interleukin 1 receptor, type II

Gene ID:

7850

Detection Antibody Information

Catalog Number:

84269-4-PBS

Host:

Rabbit

Isotype:

IgG

Purification Method:

Protein A purification

Clone ID:

241530A4

Reactivity:

human

GenBank:

BC039031

Conjugate:

Unconjugated

Full name:

interleukin 1 receptor, type II

Gene ID:

7850

Applications

Tested Applications:

Sandwich ELISA

Range:

39.1-2500 pg/mL (Sandwich ELISA)

Recommended Dilutions:

It is recommended that this reagent should be titrated in each testing system to obtain optimal results.

Product Information

MP01178-4 targets IL-1R2 in immunoassays as a matched antibody pair. Validated in Sandwich ELISA.

Capture antibody: IL-1R2 Recombinant antibody, PBS Only (Capture/Detector) 84269-1-PBS (241530B4). 100 µg. Concentration 1 mg/ml.

Detection antibody: IL-1R2 Recombinant antibody, PBS Only (Capture/Detector) 84269-4-PBS (241530A4). 100 µg. Concentration 1 mg/ml.

Alternative IL-1R2 matched antibody pairs: MP01178-1, MP01178-2, MP01178-3

Unconjugated rabbit recombinant monoclonal antibody pair in PBS only storage buffer at a concentration of 1 mg/mL, ready for conjugation. Created using Proteintech's proprietary in-house recombinant technology.

Recombinant production enables unrivalled batch-to-batch consistency, easy scale-up, and future security of supply.

Matched antibody pairs are designed for use in a variety of assays and platforms that require matched antibody pairs.

Antibody use should be optimized for each application and assay.

Storage

Storage:

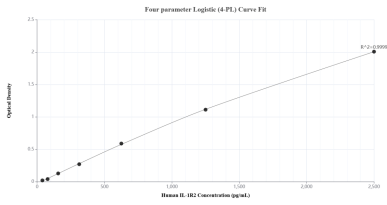
Store at -80°C.

The product is shipped with ice packs. Upon receipt, store it immediately at -80°C

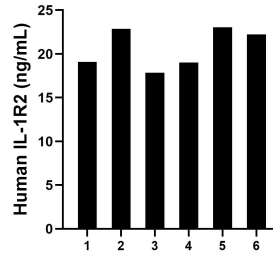
Storage buffer:

PBS only

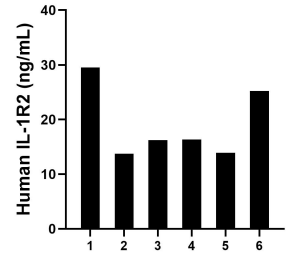
Selected Validation Data



Sandwich ELISA standard curve of MP01178-4, Human IL-1R2 Recombinant Matched Antibody Pair - PBS only. 84269-1-PBS was coated to a plate as the capture antibody and incubated with serial dilutions of standard Eg0118. 84269-4-PBS was HRP conjugated as the detection antibody. Range: 39.1-2500 pg/mL.



Serum of six individual healthy human donors was measured. The IL-1R2 concentration of detected samples was determined to be 20.7 ng/mL with a range of 17.9-23.0 ng/mL.



Plasma of six individual healthy human donors was measured. The IL-1R2 concentration of detected samples was determined to be 19.2 ng/mL with a range of 13.8-29.5 ng/mL.