

Complement component C7/C7 Recombinant Matched Antibody Pair, PBS Only

Catalog Number:MP01179-3

Capture Antibody Information

Catalog Number:
84263-4-PBS

Host:
Rabbit

Isotype:
IgG

Purification Method:
Protein A purification

Clone ID:
241551B8

Reactivity:
human

GenBank:
NM_000587.4

Conjugate:
Unconjugated

Full name:
complement component 7

Gene ID:
730

Detection Antibody Information

Catalog Number:
84263-2-PBS

Host:
Rabbit

Isotype:
IgG

Purification Method:
Protein A purification

Clone ID:
241551C11

Reactivity:
human

GenBank:
NM_000587.4

Conjugate:
Unconjugated

Full name:
complement component 7

Gene ID:
730

Applications

Tested Applications:
Cytometric bead array

Range:
0.625-80 ng/mL (Cytometric Bead Array)

Recommended Dilutions:
It is recommended that this reagent should be titrated in each testing system to obtain optimal results.

Product Information

MP01179-3 targets Complement component C7/C7 in immunoassays as a matched antibody pair. Validated in Cytometric bead array.

Capture antibody: Complement component C7/C7 Recombinant antibody, PBS Only (Capture) 84263-4-PBS (241551B8). 100 µg. Concentration 1 mg/ml.

Detection antibody: Complement component C7/C7 Recombinant antibody, PBS Only (Detector) 84263-2-PBS (241551C11). 100 µg. Concentration 1 mg/ml.

Alternative Complement component C7/C7 matched antibody pairs: MP01179-1, MP01179-2

Unconjugated rabbit recombinant monoclonal antibody pair in PBS only storage buffer at a concentration of 1 mg/mL, ready for conjugation. Created using Proteintech's proprietary in-house recombinant technology. Recombinant production enables unrivalled batch-to-batch consistency, easy scale-up, and future security of supply.

Matched antibody pairs are designed for use in a variety of assays and platforms that require matched antibody pairs.

Antibody use should be optimized for each application and assay.

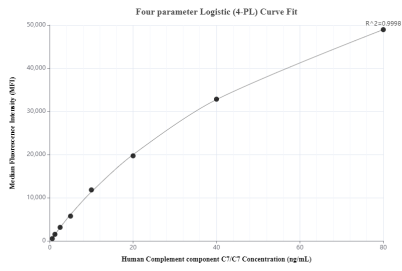
Storage

Storage:
Store at -80°C.

The product is shipped with ice packs. Upon receipt, store it immediately at -80°C

Storage buffer:
PBS only

Selected Validation Data



Cytometric bead array standard curve of MP01179-3, Complement component C7/C7 Recombinant Matched Antibody Pair, PBS Only. Capture antibody: 84263-4-PBS. Detection antibody: 84263-2-PBS. Standard: Eg1202. Range: 0.625-80 ng/mL