

For Research Use Only

C7 Recombinant Matched Antibody Pair, PBS Only



Catalog Number:MP01179-4

Capture Antibody Information

Catalog Number:
84263-2-PBS

Host:
Rabbit

Isotype:
IgG

Purification Method:
Protein A purification

Clone ID:
241551C11

Reactivity:
human

GenBank:
NM_000587.4

Conjugate:
Unconjugated

Full name:
complement component 7

Gene ID:
730

Detection Antibody Information

Catalog Number:
84263-4-PBS

Host:
Rabbit

Isotype:
IgG

Purification Method:
Protein A purification

Clone ID:
241551B8

Reactivity:
human

GenBank:
NM_000587.4

Conjugate:
Unconjugated

Full name:
complement component 7

Gene ID:
730

Applications

Tested Applications:
Sandwich ELISA

Range:
39.1-2500 pg/mL (Sandwich ELISA)

Recommended Dilutions:
It is recommended that this reagent should be titrated in each testing system to obtain optimal results.

Product Information

MP01179-4 targets C7 in immunoassays as a matched antibody pair. Validated in Sandwich ELISA.

Capture antibody: Complement component C7/C7 Recombinant antibody, PBS Only (Capture/Detector) 84263-2-PBS (241551C11). 100 µg. Concentration 1 mg/ml.

Detection antibody: Complement component C7/C7 Recombinant antibody, PBS Only (Capture/Detector) 84263-4-PBS (241551B8). 100 µg. Concentration 1 mg/ml.

Unconjugated rabbit recombinant monoclonal antibody pair in PBS only storage buffer at a concentration of 1 mg/mL, ready for conjugation. Created using Proteintech's proprietary in-house recombinant technology. Recombinant production enables unrivalled batch-to-batch consistency, easy scale-up, and future security of supply.

Matched antibody pairs are designed for use in a variety of assays and platforms that require matched antibody pairs.

Antibody use should be optimized for each application and assay.

Storage

Storage:

Store at -80°C.

The product is shipped with ice packs. Upon receipt, store it immediately at -80°C

Storage buffer:

PBS only

For technical support and original validation data for this product please contact:

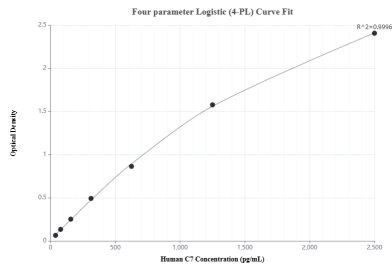
T: 4006900926

E: Proteintech-CN@ptglab.com

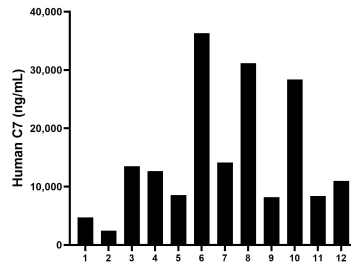
W: ptgcn.com

This product is exclusively available under Proteintech Group brand and is not available to purchase from any other manufacturer.

Selected Validation Data



Sandwich ELISA standard curve of MP01179-4, Human C7 Recombinant Matched Antibody Pair - PBS only. 84263-2-PBS was coated to a plate as the capture antibody and incubated with serial dilutions of standard Eg1202. 84263-4-PBS was HRP conjugated as the detection antibody. Range: 39.1-2500 pg/mL



Serum of twelve individual healthy human donors was measured. The human C7 concentration of detected samples was determined to be 14,954.75 ng/mL with a range of 2,439.43 - 36,317.82 ng/mL