

For Research Use Only

SEL1L Recombinant Matched Antibody Pair, PBS Only



Catalog Number:MP01186-1

Capture Antibody Information

Catalog Number:
84317-5-PBS
Host:
Rabbit
Isotype:
IgG
Purification Method:
Protein A purification

Clone ID:
241594H5
Reactivity:
human
GenBank:
NM_005065
Immunogen Catalog Number:
Ag32178

Conjugate:
Unconjugated
Full name:
sel-1 suppressor of lin-12-like (C. elegans)
Gene ID:
6400

Detection Antibody Information

Catalog Number:
84317-2-PBS
Host:
Rabbit
Isotype:
IgG
Purification Method:
Protein A purification

Clone ID:
241594C2
Reactivity:
human
GenBank:
NM_005065
Immunogen Catalog Number:
Ag32178

Conjugate:
Unconjugated
Full name:
sel-1 suppressor of lin-12-like (C. elegans)
Gene ID:
6400

Applications

Tested Applications:
Cytometric bead array, Sandwich ELISA

Range:
0.625-80 ng/mL (Cytometric Bead Array)
0.313-20 ng/mL (Sandwich ELISA)

Recommended Dilutions:
It is recommended that this reagent should be titrated in each testing system to obtain optimal results.

Product Information

MP01186-1 targets SEL1L in immunoassays as a matched antibody pair. Validated in Cytometric bead array, Sandwich ELISA.

Capture antibody: SEL1L Recombinant antibody, PBS Only (Capture) 84317-5-PBS (241594H5). 100 µg. Concentration 1 mg/ml.

Detection antibody: SEL1L Recombinant antibody, PBS Only (Detector) 84317-2-PBS (241594C2). 100 µg. Concentration 1 mg/ml.

Alternative SEL1L matched antibody pairs: MP01186-2, MP01186-3

Unconjugated rabbit recombinant monoclonal antibody pair in PBS only storage buffer at a concentration of 1 mg/mL, ready for conjugation. Created using Proteintech's proprietary in-house recombinant technology. Recombinant production enables unrivalled batch-to-batch consistency, easy scale-up, and future security of supply.

Matched antibody pairs are designed for use in a variety of assays and platforms that require matched antibody pairs.

Antibody use should be optimized for each application and assay.

Storage

Storage:
Store at -80°C.
The product is shipped with ice packs. Upon receipt, store it immediately at -80°C
Storage buffer:
PBS only

For technical support and original validation data for this product please contact:

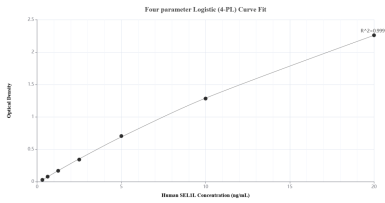
T: 4006900926

E: Proteintech-CN@ptglab.com

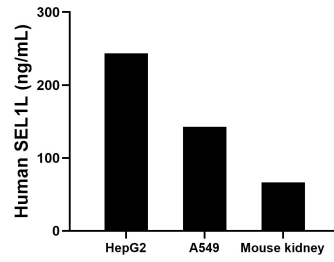
W: ptgcn.com

This product is exclusively available under Proteintech Group brand and is not available to purchase from any other manufacturer.

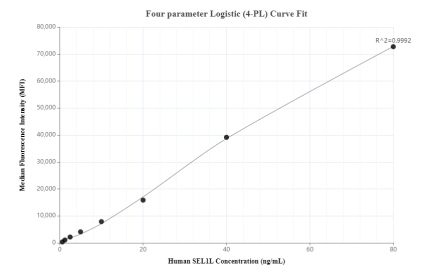
Selected Validation Data



Sandwich ELISA standard curve of MP01186-1, Human SEL1L Recombinant Matched Antibody Pair - PBS only. 84317-5-PBS was coated to a plate as the capture antibody and incubated with serial dilutions of standard Ag32178. 84317-2-PBS was HRP conjugated as the detection antibody. Range: 0.313-20 ng/mL



The mean SEL1L concentration was determined to be 243.66 ng/mL in HepG2 cell extract based on a 2.30 mg/mL extract load, 142.85 ng/mL in A549 cell extract based on a 2.70 mg/mL extract load and 66.47 ng/mL in mouse kidney cell extract based on a 3.10 mg/mL extract load.



Cytometric bead array standard curve of MP01186-1, SEL1L Recombinant Matched Antibody Pair, PBS Only. Capture antibody: 84317-5-PBS. Detection antibody: 84317-2-PBS. Standard: Ag32178. Range: 0.625-80 ng/mL