

ATPBD3 Recombinant Matched Antibody Pair, PBS Only

Catalog Number: MP01189-2

Capture Antibody Information

Catalog Number: 84318-2-PBS	Clone ID: 241630E9	Conjugate: Unconjugated
Host: Rabbit	Reactivity: human	Full name: ATP binding domain 3
Isotype: IgG	GenBank: NM_145232	Gene ID: 90353
Purification Method: Protein A purification	Immunogen Catalog Number: Ag35037	

Detection Antibody Information

Catalog Number: 84318-1-PBS	Clone ID: 241630E2	Conjugate: Unconjugated
Host: Rabbit	Reactivity: human	Full name: ATP binding domain 3
Isotype: IgG	GenBank: NM_145232	Gene ID: 90353
Purification Method: Protein A purification	Immunogen Catalog Number: Ag35037	

Applications

Tested Applications: Cytometric bead array	Range: 0.625-80 ng/mL (Cytometric Bead Array)	Recommended Dilutions: It is recommended that this reagent should be titrated in each testing system to obtain optimal results.
--	---	---

Product Information

MP01189-2 targets ATPBD3 in immunoassays as a matched antibody pair. Validated in Cytometric bead array.

Capture antibody: ATPBD3 Recombinant antibody, PBS Only (Capture) 84318-2-PBS (241630E9). 100 µg. Concentration 1 mg/ml.

Detection antibody: ATPBD3 Recombinant antibody, PBS Only (Detector) 84318-1-PBS (241630E2). 100 µg. Concentration 1 mg/ml.

Alternative ATPBD3 matched antibody pairs: MP01189-1, MP01189-3

Unconjugated rabbit recombinant monoclonal antibody pair in PBS only storage buffer at a concentration of 1 mg/mL, ready for conjugation. Created using Proteintech's proprietary in-house recombinant technology. Recombinant production enables unrivalled batch-to-batch consistency, easy scale-up, and future security of supply.

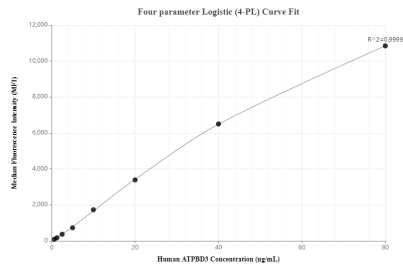
Matched antibody pairs are designed for use in a variety of assays and platforms that require matched antibody pairs.

Antibody use should be optimized for each application and assay.

Storage

Storage:
Store at -80°C.
The product is shipped with ice packs. Upon receipt, store it immediately at -80°C
Storage buffer:
PBS only

Selected Validation Data



Cytometric bead array standard curve of MP01189-2, ATPBD3 Recombinant Matched Antibody Pair, PBS Only. Capture antibody: 84318-2-PBS. Detection antibody: 84318-1-PBS. Standard: Ag35037. Range: 0.625-80 ng/mL.