

# THOP1 Recombinant Matched Antibody Pair, PBS Only

Catalog Number: MP01191-3

## Capture Antibody Information

<b>Catalog Number:</b> 84319-2-PBS	<b>Clone ID:</b> 241607E8	<b>Conjugate:</b> Unconjugated
<b>Host:</b> Rabbit	<b>Reactivity:</b> human	<b>Full name:</b> thimet oligopeptidase 1
<b>Isotype:</b> IgG	<b>GenBank:</b> BC000135	<b>Gene ID:</b> 7064
<b>Purification Method:</b> Protein A purification	<b>Immunogen Catalog Number:</b> Ag2268	

## Detection Antibody Information

<b>Catalog Number:</b> 84319-3-PBS	<b>Clone ID:</b> 241607G8	<b>Conjugate:</b> Unconjugated
<b>Host:</b> Rabbit	<b>Reactivity:</b> human	<b>Full name:</b> thimet oligopeptidase 1
<b>Isotype:</b> IgG	<b>GenBank:</b> BC000135	<b>Gene ID:</b> 7064
<b>Purification Method:</b> Protein A purification	<b>Immunogen Catalog Number:</b> Ag2268	

## Applications

<b>Tested Applications:</b> Cytometric bead array, Sandwich ELISA	<b>Range:</b> 0.313-40 ng/mL (Cytometric Bead Array) 1.56-100 ng/mL (Sandwich ELISA)	<b>Recommended Dilutions:</b> It is recommended that this reagent should be titrated in each testing system to obtain optimal results.
--	--	---

## Product Information

MP01191-3 targets THOP1 in immunoassays as a matched antibody pair. Validated in Cytometric bead array, Sandwich ELISA.

Capture antibody: THOP1 Recombinant antibody, PBS Only (Capture) 84319-2-PBS (241607E8). 100 µg. Concentration 1 mg/ml.

Detection antibody: THOP1 Recombinant antibody, PBS Only (Detector) 84319-3-PBS (241607G8). 100 µg. Concentration 1 mg/ml.

Alternative THOP1 matched antibody pairs: MP01191-1, MP01191-2

Unconjugated rabbit recombinant monoclonal antibody pair in PBS only storage buffer at a concentration of 1 mg/mL, ready for conjugation. Created using Proteintech's proprietary in-house recombinant technology. Recombinant production enables unrivalled batch-to-batch consistency, easy scale-up, and future security of supply.

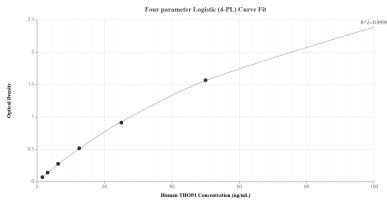
Matched antibody pairs are designed for use in a variety of assays and platforms that require matched antibody pairs.

Antibody use should be optimized for each application and assay.

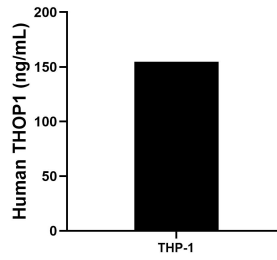
## Storage

**Storage:**  
Store at -80°C.  
**The product is shipped with ice packs. Upon receipt, store it immediately at -80°C**  
**Storage buffer:**  
PBS only

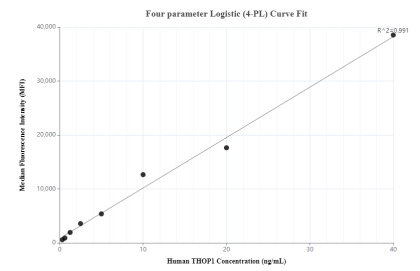
## Selected Validation Data



Sandwich ELISA standard curve of MP01191-3, Human THOP1 Recombinant Matched Antibody Pair - PBS only. 84319-2-PBS was coated to a plate as the capture antibody and incubated with serial dilutions of standard Ag2268. 84319-3-PBS was HRP conjugated as the detection antibody. Range: 1.56-100 ng/mL



The mean THOP1 concentration was determined to be 154.80 ng/mL in THP-1 cell extract based on a 4.00 mg/mL extract load.



Cytometric bead array standard curve of MP01191-3, THOP1 Recombinant Matched Antibody Pair, PBS Only. Capture antibody: 84319-2-PBS. Detection antibody: 84319-3-PBS. Standard: Ag2268. Range: 0.313-40 ng/mL