

For Research Use Only

# Mouse IGFBP3 Recombinant Matched Antibody Pair, PBS Only



Catalog Number:MP01202-2

## Capture Antibody Information

**Catalog Number:**  
84288-1-PBS  
**Host:**  
Rabbit  
**Isotype:**  
IgG  
**Purification Method:**  
Protein A purification

**Clone ID:**  
241619D3  
**Reactivity:**  
mouse  
**GenBank:**  
NM\_008343

**Conjugate:**  
Unconjugated  
**Full name:**  
insulin-like growth factor binding protein 3  
**Gene ID:**  
16009

## Detection Antibody Information

**Catalog Number:**  
84288-3-PBS  
**Host:**  
Rabbit  
**Isotype:**  
IgG  
**Purification Method:**  
Protein A purification

**Clone ID:**  
241619D10  
**Reactivity:**  
mouse  
**GenBank:**  
NM\_008343

**Conjugate:**  
Unconjugated  
**Full name:**  
insulin-like growth factor binding protein 3  
**Gene ID:**  
16009

## Applications

**Tested Applications:**  
Cytometric bead array, Sandwich ELISA

**Range:**  
0.625-80 ng/mL (Cytometric Bead Array)  
0.156-10 ng/mL (Sandwich ELISA)

**Recommended Dilutions:**  
It is recommended that this reagent should be titrated in each testing system to obtain optimal results.

## Product Information

MP01202-2 targets IGFBP3 in immunoassays as a matched antibody pair. Validated in Cytometric bead array, Sandwich ELISA.

Capture antibody: Mouse IGFBP3 Recombinant antibody, PBS Only (Capture) 84288-1-PBS (241619D3). 100 µg. Concentration 1 mg/ml.

Detection antibody: Mouse IGFBP3 Recombinant antibody, PBS Only (Capture/Detector) 84288-3-PBS (241619D10). 100 µg. Concentration 1 mg/ml.

Alternative IGFBP3 matched antibody pairs: MP01202-1, MP01202-3, MP01352-1, MP01352-2, MP01352-3

Unconjugated rabbit recombinant monoclonal antibody pair in PBS only storage buffer at a concentration of 1 mg/mL, ready for conjugation. Created using Proteintech's proprietary in-house recombinant technology. Recombinant production enables unrivalled batch-to-batch consistency, easy scale-up, and future security of supply.

Matched antibody pairs are designed for use in a variety of assays and platforms that require matched antibody pairs.

Antibody use should be optimized for each application and assay.

## Storage

**Storage:**  
Store at -80°C.  
**The product is shipped with ice packs. Upon receipt, store it immediately at -80°C**  
**Storage buffer:**  
PBS only

For technical support and original validation data for this product please contact:

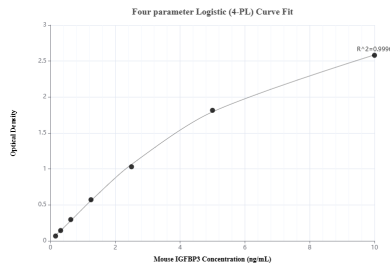
T: 4006900926

E: [Proteintech-CN@ptglab.com](mailto:Proteintech-CN@ptglab.com)

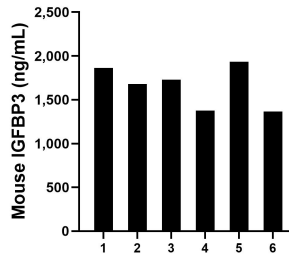
W: [ptgcn.com](http://ptgcn.com)

**This product is exclusively available under Proteintech Group brand and is not available to purchase from any other manufacturer.**

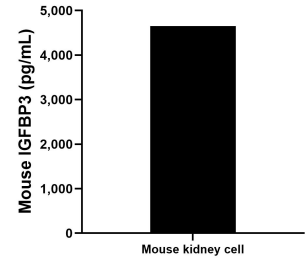
## Selected Validation Data



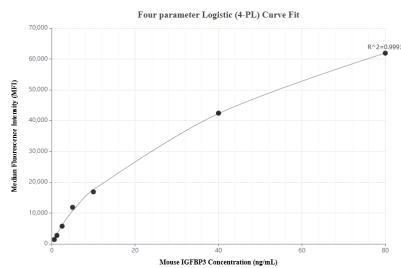
Sandwich ELISA standard curve of MP01202-2, Mouse IGFBP3 Recombinant Matched Antibody Pair - PBS only. 84288-1-PBS was coated to a plate as the capture antibody and incubated with serial dilutions of standard Eg0513. 84288-3-PBS was HRP conjugated as the detection antibody. Range: 0.156-10 ng/mL



Serum of six mice was measured. The mouse IGFBP3 concentration of detected samples was determined to be 1,658.02 ng/mL with a range of 1,364.6 - 1,933.3 ng/mL.



Mouse kidney tissue from one adult mouse (chopped in 1-2 mm pieces in 30 mL of medium) was cultured in RPMI supplemented with 10 % fetal calf serum and 50  $\mu$  M  $\beta$ -mercaptoethanol. Aliquots of the cell culture supernates were removed, assayed for levels of mouse IGFBP3, and measured 4,654.1 pg/mL.



Cytometric bead array standard curve of MP01202-2, MOUSE IGFBP3 Recombinant Matched Antibody Pair, PBS Only. Capture antibody: 84288-1-PBS. Detection antibody: 84288-3-PBS. Standard: Eg0513. Range: 0.625-80 ng/mL.