

# PAX6 Recombinant Matched Antibody Pair, PBS Only

Catalog Number:MP01219-4

## Capture Antibody Information

**Catalog Number:**  
84345-2-PBS  
**Host:**  
Rabbit  
**Isotype:**  
IgG  
**Purification Method:**  
Protein A purification

**Clone ID:**  
241521C10  
**Reactivity:**  
human  
**GenBank:**  
BC011953  
**Immunogen Catalog Number:**  
Ag2984

**Conjugate:**  
Unconjugated  
**Full name:**  
paired box 6  
**Gene ID:**  
5080

## Detection Antibody Information

**Catalog Number:**  
84345-4-PBS  
**Host:**  
Rabbit  
**Isotype:**  
IgG  
**Purification Method:**  
Protein A purification

**Clone ID:**  
241521H7  
**Reactivity:**  
human  
**GenBank:**  
BC011953  
**Immunogen Catalog Number:**  
Ag2984

**Conjugate:**  
Unconjugated  
**Full name:**  
paired box 6  
**Gene ID:**  
5080

## Applications

**Tested Applications:**  
Sandwich ELISA

**Range:**  
78.1-5000 pg/mL (Sandwich ELISA)

**Recommended Dilutions:**  
It is recommended that this reagent should be titrated in each testing system to obtain optimal results.

## Product Information

MP01219-4 targets PAX6 in immunoassays as a matched antibody pair. Validated in Sandwich ELISA.

Capture antibody: PAX6 Recombinant antibody, PBS Only (Capture) 84345-2-PBS (241521C10). 100 µg. Concentration 1 mg/ml.

Detection antibody: PAX6 Recombinant antibody, PBS Only (Capture/Detector) 84345-4-PBS (241521H7). 100 µg. Concentration 1 mg/ml.

Alternative PAX6 matched antibody pairs: MP01219-1, MP01219-2, MP01219-3

Unconjugated rabbit recombinant monoclonal antibody pair in PBS only storage buffer at a concentration of 1 mg/mL, ready for conjugation. Created using Proteintech's proprietary in-house recombinant technology. Recombinant production enables unrivalled batch-to-batch consistency, easy scale-up, and future security of supply.

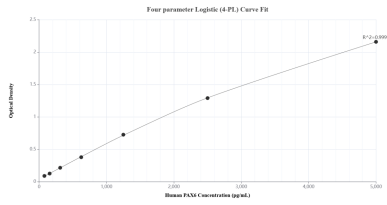
Matched antibody pairs are designed for use in a variety of assays and platforms that require matched antibody pairs.

Antibody use should be optimized for each application and assay.

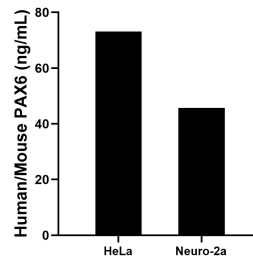
## Storage

**Storage:**  
Store at -80°C.  
**The product is shipped with ice packs. Upon receipt, store it immediately at -80°C**  
**Storage buffer:**  
PBS only

## Selected Validation Data



Sandwich ELISA standard curve of MP01219-4, Human PAX6 Recombinant Matched Antibody Pair - PBS only. 84345-2-PBS was coated to a plate as the capture antibody and incubated with serial dilutions of standard Ag2984. 84345-4-PBS was HRP conjugated as the detection antibody. Range: 78.1-5000 pg/mL



The mean PAX6 concentration was determined to be 73.1 ng/mL in HeLa cell extract based on a 2.8 mg/mL extract load and 45.8 ng/mL in Neuro-2a cell extract based on a 2.3 mg/mL extract load.