

For Research Use Only



TSG101 Recombinant Matched Antibody Pair, PBS Only

Catalog Number:MP01221-2

Capture Antibody Information

Catalog Number:
84334-2-PBS
Host:
Rabbit
Isotype:
IgG
Purification Method:
Protein A purification

Clone ID:
241657A11
Reactivity:
human
GenBank:
BC002487
Immunogen Catalog Number:
Ag28569

Conjugate:
Unconjugated
Full name:
tumor susceptibility gene 101
Gene ID:
7251

Detection Antibody Information

Catalog Number:
84334-3-PBS
Host:
Rabbit
Isotype:
IgG
Purification Method:
Protein A purification

Clone ID:
241657F4
Reactivity:
human
GenBank:
BC002487
Immunogen Catalog Number:
Ag28569

Conjugate:
Unconjugated
Full name:
tumor susceptibility gene 101
Gene ID:
7251

Applications

Tested Applications:
Sandwich ELISA

Range:
39.1-2500 pg/mL (Sandwich ELISA)

Recommended Dilutions:
It is recommended that this reagent should be titrated in each testing system to obtain optimal results.

Product Information

MP01221-2 targets TSG101 in immunoassays as a matched antibody pair. Validated in Sandwich ELISA.

Capture antibody: TSG101 Recombinant antibody, PBS Only (Capture) 84334-2-PBS (241657A11). 100 µg. Concentration 1 mg/ml.

Detection antibody: TSG101 Recombinant antibody, PBS Only (Detector) 84334-3-PBS (241657F4). 100 µg. Concentration 1 mg/ml.

Alternative TSG101 matched antibody pairs: MP01221-1

Unconjugated rabbit recombinant monoclonal antibody pair in PBS only storage buffer at a concentration of 1 mg/mL, ready for conjugation. Created using Proteintech's proprietary in-house recombinant technology. Recombinant production enables unrivalled batch-to-batch consistency, easy scale-up, and future security of supply.

Matched antibody pairs are designed for use in a variety of assays and platforms that require matched antibody pairs.

Antibody use should be optimized for each application and assay.

Storage

Storage:
Store at -80°C.
The product is shipped with ice packs. Upon receipt, store it immediately at -80°C
Storage buffer:
PBS only

For technical support and original validation data for this product please contact:

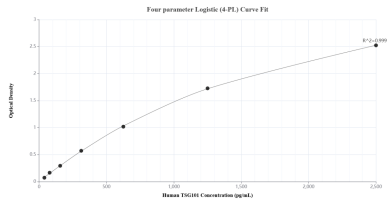
T: 4006900926

E: Proteintech-CN@ptglab.com

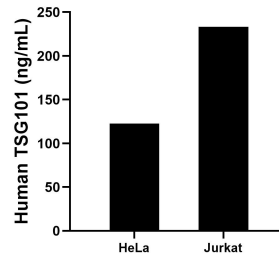
W: ptgcn.com

This product is exclusively available under Proteintech Group brand and is not available to purchase from any other manufacturer.

Selected Validation Data



Sandwich ELISA standard curve of MP01221-2, Human TSG101 Recombinant Matched Antibody Pair - PBS only. 84334-2-PBS was coated to a plate as the capture antibody and incubated with serial dilutions of standard Ag28569. 84334-3-PBS was HRP conjugated as the detection antibody. Range: 39.1-2500 pg/mL.



The mean TSG101 concentration was determined to be 122.7 ng/mL in HeLa cell extract based on a 1.5 mg/mL extract load and 233.2 ng/mL in Jurkat cell extract based on a 1.5 mg/mL extract load.