

For Research Use Only

# CD157 Recombinant Matched Antibody Pair, PBS Only



Catalog Number:MP01225-4

## Capture Antibody Information

Catalog Number:  
84333-1-PBS

Host:  
Rabbit

Isotype:  
IgG

Purification Method:  
Protein A purification

Clone ID:  
241424D7

Reactivity:  
human

GenBank:  
BC012095

Conjugate:  
Unconjugated

Full name:  
bone marrow stromal cell antigen 1

Gene ID:  
683

## Detection Antibody Information

Catalog Number:  
84333-5-PBS

Host:  
Rabbit

Isotype:  
IgG

Purification Method:  
Protein A purification

Clone ID:  
241424A2

Reactivity:  
human

GenBank:  
BC012095

Conjugate:  
Unconjugated

Full name:  
bone marrow stromal cell antigen 1

Gene ID:  
683

## Applications

Tested Applications:  
Sandwich ELISA

Range:  
19.5-1250 pg/mL (Sandwich ELISA)

Recommended Dilutions:  
It is recommended that this reagent should be titrated in each testing system to obtain optimal results.

## Product Information

MP01225-4 targets CD157 in immunoassays as a matched antibody pair. Validated in Sandwich ELISA.

Capture antibody: CD157 Recombinant antibody, PBS Only (Capture) 84333-1-PBS (241424D7). 100 µg. Concentration 1 mg/ml.

Detection antibody: BST1 Recombinant antibody, PBS Only (Detector) 84333-5-PBS (241424A2). 100 µg. Concentration 1 mg/ml.

Alternative CD157 matched antibody pairs: MP01225-1, MP01225-2, MP01225-3, MP01303-1, MP01303-2, MP01303-3

Unconjugated rabbit recombinant monoclonal antibody pair in PBS only storage buffer at a concentration of 1 mg/mL, ready for conjugation. Created using Proteintech's proprietary in-house recombinant technology. Recombinant production enables unrivalled batch-to-batch consistency, easy scale-up, and future security of supply.

Matched antibody pairs are designed for use in a variety of assays and platforms that require matched antibody pairs.

Antibody use should be optimized for each application and assay.

## Storage

Storage:

Store at -80°C.

**The product is shipped with ice packs. Upon receipt, store it immediately at -80°C**

Storage buffer:

PBS only

For technical support and original validation data for this product please contact:

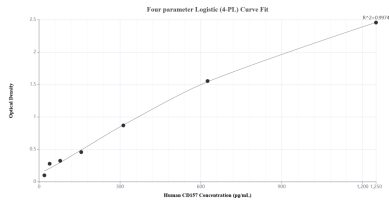
T: 4006900926

E: [Proteintech-CN@ptglab.com](mailto:Proteintech-CN@ptglab.com)

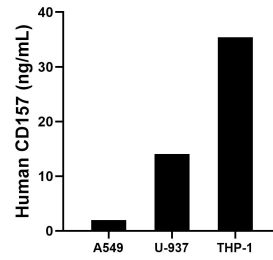
W: [ptgcn.com](http://ptgcn.com)

**This product is exclusively available under Proteintech Group brand and is not available to purchase from any other manufacturer.**

## Selected Validation Data



Sandwich ELISA standard curve of MP01225-4, Human CD157 Recombinant Matched Antibody Pair - PBS only. 84333-1-PBS was coated to a plate as the capture antibody and incubated with serial dilutions of standard RPO2348. 84333-5-PBS was HRP conjugated as the detection antibody. Range: 19.5-1250 pg/mL.



The mean CD157 concentration was determined to be 2.0 ng/mL in A549 cell extract based on a 1.0 mg/mL extract load, 14.0 ng/mL in U-937 cell extract based on a 5.4 mg/mL extract load and 35.4 ng/mL in THP-1 cell extract based on a 1.2 mg/mL extract load.