

For Research Use Only

# LIMK2 Recombinant Matched Antibody Pair, PBS Only



Catalog Number:MP01226-2

## Capture Antibody Information

Catalog Number:  
82977-2-PBS

Host:  
Rabbit

Isotype:  
IgG

Purification Method:  
Protein A purification

Clone ID:  
230283H8

Reactivity:  
human

GenBank:  
BC013051

Immunogen Catalog Number:  
Ag3011

Conjugate:  
Unconjugated

Full name:  
LIM domain kinase 2

Gene ID:  
3985

## Detection Antibody Information

Catalog Number:  
82977-3-PBS

Host:  
Rabbit

Isotype:  
IgG

Purification Method:  
Protein A purification

Clone ID:  
230283E12

Reactivity:  
human

GenBank:  
BC013051

Immunogen Catalog Number:  
Ag3011

Conjugate:  
Unconjugated

Full name:  
LIM domain kinase 2

Gene ID:  
3985

## Applications

Tested Applications:  
Sandwich ELISA

Range:  
0.39-25 ng/mL (Sandwich ELISA)

Recommended Dilutions:  
It is recommended that this reagent should be titrated in each testing system to obtain optimal results.

## Product Information

MP01226-2 targets LIMK2 in immunoassays as a matched antibody pair. Validated in Sandwich ELISA.

Capture antibody: LIMK2 Recombinant antibody, PBS Only (Capture) 82977-2-PBS (230283H8). 100  $\mu$ g. Concentration 1 mg/ml.

Detection antibody: LIMK2 Recombinant antibody, PBS Only (Detector) 82977-3-PBS (230283E12). 100  $\mu$ g. Concentration 1 mg/ml.

Unconjugated rabbit recombinant monoclonal antibody pair in PBS only storage buffer at a concentration of 1 mg/mL, ready for conjugation. Created using Proteintech's proprietary in-house recombinant technology. Recombinant production enables unrivalled batch-to-batch consistency, easy scale-up, and future security of supply.

Matched antibody pairs are designed for use in a variety of assays and platforms that require matched antibody pairs.

Antibody use should be optimized for each application and assay.

## Storage

Storage:

Store at -80°C.

The product is shipped with ice packs. Upon receipt, store it immediately at -80°C

Storage buffer:

PBS only

For technical support and original validation data for this product please contact:

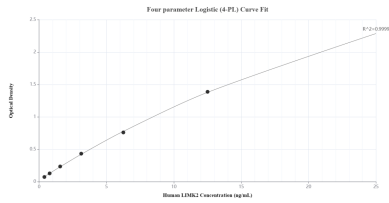
T: 4006900926

E: Proteintech-CN@ptglab.com

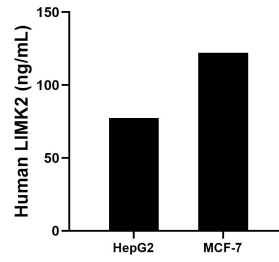
W: ptgcn.com

This product is exclusively available under Proteintech Group brand and is not available to purchase from any other manufacturer.

## Selected Validation Data



Sandwich ELISA standard curve of MP01226-2, Human LIMK2 Recombinant Matched Antibody Pair - PBS only. 82977-2-PBS was coated to a plate as the capture antibody and incubated with serial dilutions of standard Ag3011. 82977-3-PBS was HRP conjugated as the detection antibody. Range: 0.39-25 ng/mL



The mean LIMK2 concentration was determined to be 77.33 ng/mL in HepG2 cell extract based on a 1.20 mg/mL extract load and 122.10 ng/mL in MCF-7 cell extract based on a 1.20 mg/mL extract load.