

For Research Use Only

POLR3C Recombinant Matched Antibody Pair, PBS Only



Catalog Number:MP01234-4

Capture Antibody Information

Catalog Number:
84367-5-PBS
Host:
Rabbit
Isotype:
IgG
Purification Method:
Protein A purification

Clone ID:
241402F12
Reactivity:
human
GenBank:
BC002586
Immunogen Catalog Number:
Ag27311

Conjugate:
Unconjugated
Full name:
polymerase (RNA) III (DNA directed) polypeptide C (62kD)
Gene ID:
10623

Detection Antibody Information

Catalog Number:
84367-4-PBS
Host:
Rabbit
Isotype:
IgG
Purification Method:
Protein A purification

Clone ID:
241402E12
Reactivity:
human
GenBank:
BC002586
Immunogen Catalog Number:
Ag27311

Conjugate:
Unconjugated
Full name:
polymerase (RNA) III (DNA directed) polypeptide C (62kD)
Gene ID:
10623

Applications

Tested Applications:
Sandwich ELISA

Range:
39.1-2500 pg/mL (Sandwich ELISA)

Recommended Dilutions:
It is recommended that this reagent should be titrated in each testing system to obtain optimal results.

Product Information

MP01234-4 targets POLR3C in immunoassays as a matched antibody pair. Validated in Sandwich ELISA.

Capture antibody: POLR3C Recombinant antibody, PBS Only (Capture) 84367-5-PBS (241402F12). 100 μ g. Concentration 1 mg/ml.

Detection antibody: POLR3C Recombinant antibody, PBS Only (Capture/Detector) 84367-4-PBS (241402E12). 100 μ g. Concentration 1 mg/ml.

Alternative POLR3C matched antibody pairs: MP01234-1, MP01234-2, MP01234-3

Unconjugated rabbit recombinant monoclonal antibody pair in PBS only storage buffer at a concentration of 1 mg/mL, ready for conjugation. Created using Proteintech's proprietary in-house recombinant technology. Recombinant production enables unrivalled batch-to-batch consistency, easy scale-up, and future security of supply.

Matched antibody pairs are designed for use in a variety of assays and platforms that require matched antibody pairs.

Antibody use should be optimized for each application and assay.

Storage

Storage:
Store at -80°C.
The product is shipped with ice packs. Upon receipt, store it immediately at -80°C
Storage buffer:
PBS only

For technical support and original validation data for this product please contact:

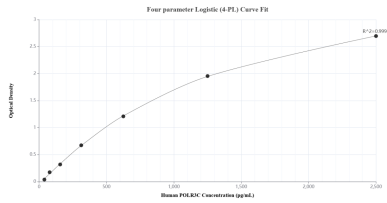
T: 4006900926

E: Proteintech-CN@ptglab.com

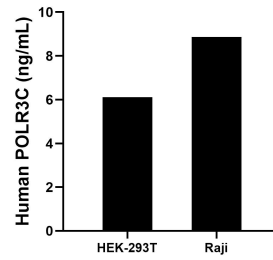
W: ptgcn.com

This product is exclusively available under Proteintech Group brand and is not available to purchase from any other manufacturer.

Selected Validation Data



Sandwich ELISA standard curve of MP01234-4, Human POLR3C Recombinant Matched Antibody Pair - PBS only. 84367-5-PBS was coated to a plate as the capture antibody and incubated with serial dilutions of standard Ag27311. 84367-4-PBS was HRP conjugated as the detection antibody. Range: 39.1-2500 pg/mL



The mean POLR3C concentration was determined to be 6.1 ng/mL in HEK-293T cell extract based on a 1.4 mg/mL extract load and 8.9 ng/mL in Raji cell extract based on a 1.2 mg/mL extract load.