

For Research Use Only

Kindlin 2 Recombinant Matched Antibody Pair, PBS Only



Catalog Number:MP01239-1

Capture Antibody Information

Catalog Number:
84362-2-PBS
Host:
Rabbit
Isotype:
IgG
Purification Method:
Protein A purification

Clone ID:
241665B4
Reactivity:
human
GenBank:
BC017327
Immunogen Catalog Number:
Ag33840

Conjugate:
Unconjugated
Full name:
fermitin family homolog 2 (Drosophila)
Gene ID:
10979

Detection Antibody Information

Catalog Number:
84362-1-PBS
Host:
Rabbit
Isotype:
IgG
Purification Method:
Protein A purification

Clone ID:
241665A5
Reactivity:
human
GenBank:
BC017327
Immunogen Catalog Number:
Ag33840

Conjugate:
Unconjugated
Full name:
fermitin family homolog 2 (Drosophila)
Gene ID:
10979

Applications

Tested Applications:
Cytometric bead array, Sandwich ELISA

Range:
0.625-80 ng/mL (Cytometric Bead Array)
0.313-20 ng/mL (Sandwich ELISA)

Recommended Dilutions:
It is recommended that this reagent should be titrated in each testing system to obtain optimal results.

Product Information

MP01239-1 targets Kindlin 2 in immunoassays as a matched antibody pair. Validated in Cytometric bead array, Sandwich ELISA.

Capture antibody: Kindlin 2 Recombinant antibody, PBS Only (Capture) 84362-2-PBS (241665B4). 100 µg. Concentration 1 mg/ml.

Detection antibody: Kindlin 2 Recombinant antibody, PBS Only (Detector) 84362-1-PBS (241665A5). 100 µg. Concentration 1 mg/ml.

Alternative Kindlin 2 matched antibody pairs: MP01239-2

Unconjugated rabbit recombinant monoclonal antibody pair in PBS only storage buffer at a concentration of 1 mg/mL, ready for conjugation. Created using Proteintech's proprietary in-house recombinant technology. Recombinant production enables unrivalled batch-to-batch consistency, easy scale-up, and future security of supply.

Matched antibody pairs are designed for use in a variety of assays and platforms that require matched antibody pairs.

Antibody use should be optimized for each application and assay.

Storage

Storage:
Store at -80°C.
The product is shipped with ice packs. Upon receipt, store it immediately at -80°C
Storage buffer:
PBS only

For technical support and original validation data for this product please contact:

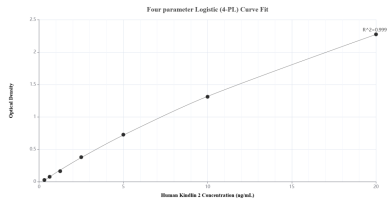
T: 4006900926

E: Proteintech-CN@ptglab.com

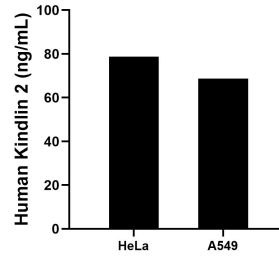
W: ptgcn.com

This product is exclusively available under Proteintech Group brand and is not available to purchase from any other manufacturer.

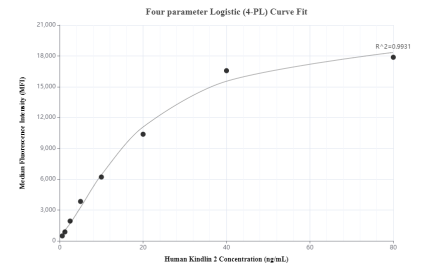
Selected Validation Data



Sandwich ELISA standard curve of MP01239-1, Human Kindlin 2 Recombinant Matched Antibody Pair - PBS only. 84362-2-PBS was coated to a plate as the capture antibody and incubated with serial dilutions of standard Ag33840. 84362-1-PBS was HRP conjugated as the detection antibody. Range: 0.313-20 ng/mL.



The mean Kindlin 2 concentration was determined to be 78.81 ng/mL in HeLa cell extract based on a 1.50 mg/mL extract load and 68.63 ng/mL in A549 cell extract based on a 2.50 mg/mL extract load.



Cytometric bead array standard curve of MP01239-1, Kindlin 2 Recombinant Matched Antibody Pair, PBS Only. Capture antibody: 84362-2-PBS. Detection antibody: 84362-1-PBS. Standard: Ag33840. Range: 0.625-80 ng/mL.