

For Research Use Only

ZNF148 Recombinant Matched Antibody Pair, PBS Only



Catalog Number:MP01253-1

Capture Antibody Information

Catalog Number:
84338-1-PBS

Host:
Rabbit

Isotype:
IgG

Purification Method:
Protein A purification

Clone ID:
241632D5

Reactivity:
human

GenBank:
BC035591

Immunogen Catalog Number:
Ag35742

Conjugate:
Unconjugated

Full name:
zinc finger protein 148

Gene ID:
7707

Detection Antibody Information

Catalog Number:
84338-2-PBS

Host:
Rabbit

Isotype:
IgG

Purification Method:
Protein A purification

Clone ID:
241632F10

Reactivity:
human

GenBank:
BC035591

Immunogen Catalog Number:
Ag35742

Conjugate:
Unconjugated

Full name:
zinc finger protein 148

Gene ID:
7707

Applications

Tested Applications:
Cytometric bead array, Sandwich ELISA

Range:
0.313-40 ng/mL (Cytometric Bead Array)
19.5-1250 pg/mL (Sandwich ELISA)

Recommended Dilutions:
It is recommended that this reagent should be titrated in each testing system to obtain optimal results.

Product Information

MP01253-1 targets ZNF148 in immunoassays as a matched antibody pair. Validated in Cytometric bead array, Sandwich ELISA.

Capture antibody: ZNF148 Recombinant antibody, PBS Only (Capture) 84338-1-PBS (241632D5). 100 µg. Concentration 1 mg/ml.

Detection antibody: ZNF148 Recombinant antibody, PBS Only (Detector) 84338-2-PBS (241632F10). 100 µg. Concentration 1 mg/ml.

Unconjugated rabbit recombinant monoclonal antibody pair in PBS only storage buffer at a concentration of 1 mg/mL, ready for conjugation. Created using Proteintech's proprietary in-house recombinant technology. Recombinant production enables unrivalled batch-to-batch consistency, easy scale-up, and future security of supply.

Matched antibody pairs are designed for use in a variety of assays and platforms that require matched antibody pairs.

Antibody use should be optimized for each application and assay.

Storage

Storage:
Store at -80°C.

The product is shipped with ice packs. Upon receipt, store it immediately at -80°C

Storage buffer:
PBS only

For technical support and original validation data for this product please contact:

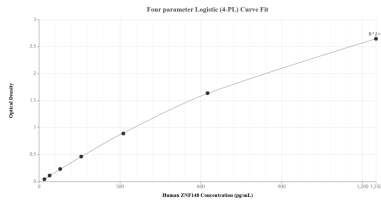
T: 4006900926

E: Proteintech-CN@ptglab.com

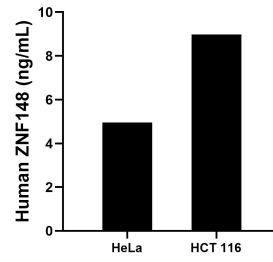
W: ptgcn.com

This product is exclusively available under Proteintech Group brand and is not available to purchase from any other manufacturer.

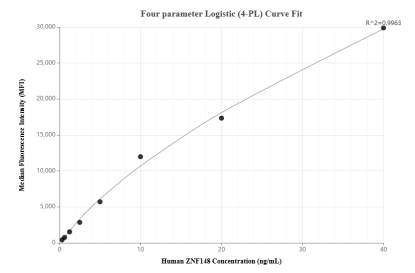
Selected Validation Data



Sandwich ELISA standard curve of MP01253-1, Human ZNF148 Recombinant Matched Antibody Pair - PBS only. 84338-1-PBS was coated to a plate as the capture antibody and incubated with serial dilutions of standard Ag35742. 84338-2-PBS was HRP conjugated as the detection antibody. Range: 19.5-1250 pg/mL



The mean ZNF148 concentration was determined to be 5.0 ng/mL in HeLa cell extract based on a 1.3 mg/mL extract load and 9.0 ng/mL in HCT 116 cell extract based on a 4.3 mg/mL extract load.



Cytometric bead array standard curve of MP01253-1, ZNF148 Recombinant Matched Antibody Pair, PBS Only. Capture antibody: 84338-1-PBS. Detection antibody: 84338-2-PBS. Standard: Ag35742. Range: 0.313-40 ng/mL