

For Research Use Only

CD33 Recombinant Matched Antibody Pair, PBS Only



Catalog Number:MP01254-1

Capture Antibody Information

Catalog Number:
84341-2-PBS

Host:
Rabbit

Isotype:
IgG

Purification Method:
Protein A purification

Clone ID:
241711C12

Reactivity:
human

GenBank:
BC028152

Conjugate:
Unconjugated

Full name:
CD33 molecule

Gene ID:
945

Detection Antibody Information

Catalog Number:
84341-1-PBS

Host:
Rabbit

Isotype:
IgG

Purification Method:
Protein A purification

Clone ID:
241711A6

Reactivity:
human

GenBank:
BC028152

Conjugate:
Unconjugated

Full name:
CD33 molecule

Gene ID:
945

Applications

Tested Applications:
Cytometric bead array, Sandwich ELISA

Range:
0.313-40 ng/mL (Cytometric Bead Array)
78.1-2500 pg/mL (Sandwich ELISA)

Recommended Dilutions:
It is recommended that this reagent should be titrated in each testing system to obtain optimal results.

Product Information

MP01254-1 targets CD33 in immunoassays as a matched antibody pair. Validated in Cytometric bead array, Sandwich ELISA.

Capture antibody: CD33 Recombinant antibody, PBS Only (Capture) 84341-2-PBS (241711C12). 100 µg. Concentration 1 mg/ml.

Detection antibody: CD33 Recombinant antibody, PBS Only (Detector) 84341-1-PBS (241711A6). 100 µg. Concentration 1 mg/ml.

Unconjugated rabbit recombinant monoclonal antibody pair in PBS only storage buffer at a concentration of 1 mg/mL, ready for conjugation. Created using Proteintech's proprietary in-house recombinant technology. Recombinant production enables unrivalled batch-to-batch consistency, easy scale-up, and future security of supply.

Matched antibody pairs are designed for use in a variety of assays and platforms that require matched antibody pairs.

Antibody use should be optimized for each application and assay.

Storage

Storage:
Store at -80°C.

The product is shipped with ice packs. Upon receipt, store it immediately at -80°C

Storage buffer:
PBS only

For technical support and original validation data for this product please contact:

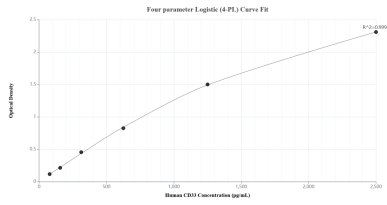
T: 4006900926

E: Proteintech-CN@ptglab.com

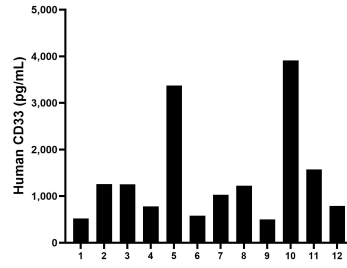
W: ptgcn.com

This product is exclusively available under Proteintech Group brand and is not available to purchase from any other manufacturer.

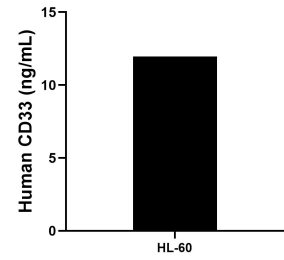
Selected Validation Data



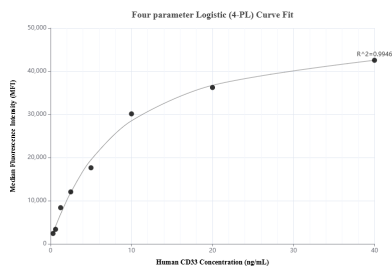
Sandwich ELISA standard curve of MP01254-1, Human CD33 Recombinant Matched Antibody Pair - PBS only. 84341-2-PBS was coated to a plate as the capture antibody and incubated with serial dilutions of standard Eg2138. 84341-1-PBS was HRP conjugated as the detection antibody. Range: 78.1-2500 pg/mL



Serum of twelve individual healthy human donors was measured. The CD33 concentration of detected samples was determined to be 1,399.3 pg/mL with a range of 520.6-3,913.4 pg/mL.



The mean CD33 concentration was determined to be 12.0 ng/mL in HL-60 cell extract based on a 1.4 mg/mL extract load.



Cytometric bead array standard curve of MP01254-1, CD33 Recombinant Matched Antibody Pair, PBS Only. Capture antibody: 84341-2-PBS. Detection antibody: 84341-1-PBS. Standard: Eg2138. Range: 0.313-40 ng/mL