

For Research Use Only

# C5AR1/CD88 Recombinant Matched Antibody Pair, PBS Only



Catalog Number:MP01255-4

## Capture Antibody Information

Catalog Number:  
84336-8-PBS

Host:  
Rabbit

Isotype:  
IgG

Purification Method:  
Protein A purification

Clone ID:  
241712E2

Reactivity:  
human

GenBank:  
NM\_001736.4

Conjugate:  
Unconjugated

Full name:  
complement component 5a receptor 1

Gene ID:  
728

## Detection Antibody Information

Catalog Number:  
84336-4-PBS

Host:  
Rabbit

Isotype:  
IgG

Purification Method:  
Protein A purification

Clone ID:  
241712A8

Reactivity:  
human

GenBank:  
NM\_001736.4

Conjugate:  
Unconjugated

Full name:  
complement component 5a receptor 1

Gene ID:  
728

## Applications

Tested Applications:  
Sandwich ELISA

Range:  
0.156-10 ng/mL (Sandwich ELISA)

Recommended Dilutions:  
It is recommended that this reagent should be titrated in each testing system to obtain optimal results.

## Product Information

MP01255-4 targets C5AR1/CD88 in immunoassays as a matched antibody pair. Validated in Sandwich ELISA.

Capture antibody: C5AR1/CD88 Recombinant antibody, PBS Only (Capture) 84336-8-PBS (241712E2). 100  $\mu$ g. Concentration 1 mg/ml.

Detection antibody: C5AR1/CD88 Recombinant antibody, PBS Only (Capture/Detector) 84336-4-PBS (241712A8). 100  $\mu$ g. Concentration 1 mg/ml.

Unconjugated rabbit recombinant monoclonal antibody pair in PBS only storage buffer at a concentration of 1 mg/mL, ready for conjugation. Created using Proteintech's proprietary in-house recombinant technology. Recombinant production enables unrivalled batch-to-batch consistency, easy scale-up, and future security of supply.

Matched antibody pairs are designed for use in a variety of assays and platforms that require matched antibody pairs.

Antibody use should be optimized for each application and assay.

## Storage

Storage:  
Store at -80°C.

The product is shipped with ice packs. Upon receipt, store it immediately at -80°C

Storage buffer:  
PBS only

For technical support and original validation data for this product please contact:

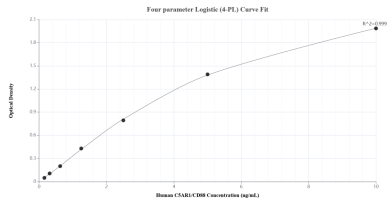
T: 4006900926

E: Proteintech-CN@ptglab.com

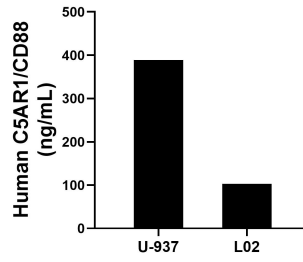
W: ptgcn.com

This product is exclusively available under Proteintech Group brand and is not available to purchase from any other manufacturer.

## Selected Validation Data



Sandwich ELISA standard curve of MP01255-4, Human C5AR1/CD88 Recombinant Matched Antibody Pair - PBS only. 84336-8-PBS was coated to a plate as the capture antibody and incubated with serial dilutions of standard Eg2185. 84336-4-PBS was HRP conjugated as the detection antibody. Range: 0.156-10 ng/mL



The mean C5AR1/CD88 concentration was determined to be 388.97 ng/mL in U-937 cell extract based on a 2.20 mg/mL extract load and 103.14 ng/mL in L02 cell extract based on a 1.30 mg/mL extract load.