

For Research Use Only

CD98/SLC3A2 Recombinant Matched Antibody Pair, PBS Only



Catalog Number:MP01259-1

Capture Antibody Information

Catalog Number:
84387-3-PBS
Host:
Rabbit
Isotype:
IgG
Purification Method:
Protein A purification

Clone ID:
241755G1
Reactivity:
human
GenBank:
NM_002394.5

Conjugate:
Unconjugated
Full name:
solute carrier family 3 (activators of dibasic and neutral amino acid transport), member 2
Gene ID:
6520

Detection Antibody Information

Catalog Number:
84387-4-PBS
Host:
Rabbit
Isotype:
IgG
Purification Method:
Protein A purification

Clone ID:
241755G8
Reactivity:
human
GenBank:
NM_002394.5

Conjugate:
Unconjugated
Full name:
solute carrier family 3 (activators of dibasic and neutral amino acid transport), member 2
Gene ID:
6520

Applications

Tested Applications:
Cytometric bead array, Sandwich ELISA

Range:
0.156-20 ng/mL (Cytometric Bead Array)
1.25-40 ng/mL (Sandwich ELISA)

Recommended Dilutions:
It is recommended that this reagent should be titrated in each testing system to obtain optimal results.

Product Information

MP01259-1 targets CD98/SLC3A2 in immunoassays as a matched antibody pair. Validated in Cytometric bead array, Sandwich ELISA.

Capture antibody: CD98/SLC3A2 Recombinant antibody, PBS Only (Capture) 84387-3-PBS (241755G1). 100 µg. Concentration 1 mg/ml.

Detection antibody: CD98/SLC3A2 Recombinant antibody, PBS Only (Detector) 84387-4-PBS (241755G8). 100 µg. Concentration 1 mg/ml.

Alternative CD98/SLC3A2 matched antibody pairs: MP00969-1, MP00969-2, MP00969-3

Unconjugated rabbit recombinant monoclonal antibody pair in PBS only storage buffer at a concentration of 1 mg/mL, ready for conjugation. Created using Proteintech's proprietary in-house recombinant technology. Recombinant production enables unrivalled batch-to-batch consistency, easy scale-up, and future security of supply.

Matched antibody pairs are designed for use in a variety of assays and platforms that require matched antibody pairs.

Antibody use should be optimized for each application and assay.

Storage

Storage:
Store at -80°C.
The product is shipped with ice packs. Upon receipt, store it immediately at -80°C
Storage buffer:
PBS only

For technical support and original validation data for this product please contact:

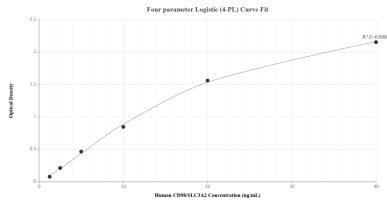
T: 4006900926

E: Proteintech-CN@ptglab.com

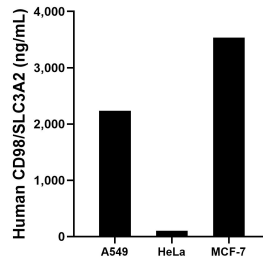
W: ptgcn.com

This product is exclusively available under Proteintech Group brand and is not available to purchase from any other manufacturer.

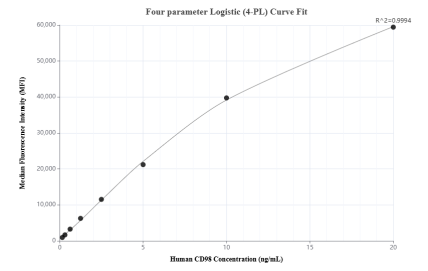
Selected Validation Data



Sandwich ELISA standard curve of MP01259-1, Human CD98/SLC3A2 Recombinant Matched Antibody Pair - PBS only. 84387-3-PBS was coated to a plate as the capture antibody and incubated with serial dilutions of standard Eg1948. 84387-4-PBS was HRP conjugated as the detection antibody. Range: 1.25-40 ng/mL



The mean CD98/SLC3A2 concentration was determined to be 2,237.79 ng/mL in A549 cell extract based on a 2.50 mg/mL extract load, 103.17 ng/mL in HeLa cell extract based on a 2.80 mg/mL extract load and 3,533.79 ng/mL in MCF-7 cell extract based on a 3.20 mg/mL extract load.



Cytometric bead array standard curve of MP01259-1, CD98/SLC3A2 Recombinant Matched Antibody Pair, PBS Only. Capture antibody: 84387-3-PBS. Detection antibody: 84387-4-PBS. Standard: Eg1948. Range: 0.156-20 ng/mL