

ZBP1 Recombinant Matched Antibody Pair, PBS Only

Catalog Number:MP01267-1

Capture Antibody Information

Catalog Number: 84396-1-PBS	Clone ID: 241582B7	Conjugate: Unconjugated
Host: Rabbit	Reactivity: human	Full name: Z-DNA binding protein 1
Isotype: IgG	GenBank: BC028218	Gene ID: 81030
Purification Method: Protein A purification	Immunogen Catalog Number: Ag4119	

Detection Antibody Information

Catalog Number: 84396-2-PBS	Clone ID: 241582E2	Conjugate: Unconjugated
Host: Rabbit	Reactivity: human	Full name: Z-DNA binding protein 1
Isotype: IgG	GenBank: BC028218	Gene ID: 81030
Purification Method: Protein A purification	Immunogen Catalog Number: Ag4119	

Applications

Tested Applications: Cytometric bead array, Sandwich ELISA	Range: 0.781-100 ng/mL (Cytometric Bead Array) 156-5000 pg/mL (Sandwich ELISA)	Recommended Dilutions: It is recommended that this reagent should be titrated in each testing system to obtain optimal results.
--	---	---

Product Information

MP01267-1 targets ZBP1 in immunoassays as a matched antibody pair. Validated in Cytometric bead array, Sandwich ELISA.

Capture antibody: ZBP1 Recombinant antibody, PBS Only (Capture) 84396-1-PBS (241582B7). 100 µg. Concentration 1 mg/mL.

Detection antibody: ZBP1 Recombinant antibody, PBS Only (Detector) 84396-2-PBS (241582E2). 100 µg. Concentration 1 mg/mL.

Unconjugated rabbit recombinant monoclonal antibody pair in PBS only storage buffer at a concentration of 1 mg/mL, ready for conjugation. Created using Proteintech's proprietary in-house recombinant technology. Recombinant production enables unrivalled batch-to-batch consistency, easy scale-up, and future security of supply.

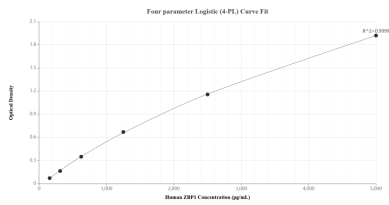
Matched antibody pairs are designed for use in a variety of assays and platforms that require matched antibody pairs.

Antibody use should be optimized for each application and assay.

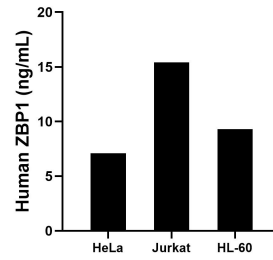
Storage

Storage:
Store at -80°C.
The product is shipped with ice packs. Upon receipt, store it immediately at -80°C
Storage buffer:
PBS only

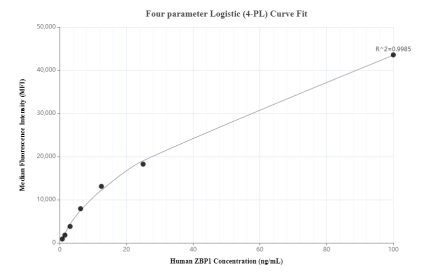
Selected Validation Data



Sandwich ELISA standard curve of MP01267-1, Human ZBP1 Recombinant Matched Antibody Pair - PBS only. 84396-1-PBS was coated to a plate as the capture antibody and incubated with serial dilutions of standard Ag4119. 84396-2-PBS was HRP conjugated as the detection antibody. Range: 156-5000 pg/mL



The mean ZBP1 concentration was determined to be 7.1 ng/mL in HeLa cell extract based on a 2.8 mg/mL extract load, 15.4 ng/mL in Jurkat cell extract based on a 1.5 mg/mL extract load and 9.3 ng/mL in HL-60 cell extract based on a 1.4 mg/mL extract load.



Cytometric bead array standard curve of MP01267-1, ZBP1 Recombinant Matched Antibody Pair, PBS Only. Capture antibody: 84396-1-PBS. Detection antibody: 84396-2-PBS. Standard: Ag4119. Range: 0.781-100 ng/mL