

For Research Use Only

SCD Recombinant Matched Antibody Pair, PBS Only



Catalog Number:MP01272-2

Capture Antibody Information

Catalog Number:
81468-4-PBS
Host:
Rabbit
Isotype:
IgG
Purification Method:
Protein A purification

Clone ID:
241487F3
Reactivity:
human
GenBank:
BC005807
Immunogen Catalog Number:
Ag29156

Conjugate:
Unconjugated
Full name:
stearoyl-CoA desaturase (delta-9-desaturase)
Gene ID:
6319

Detection Antibody Information

Catalog Number:
81468-3-PBS
Host:
Rabbit
Isotype:
IgG
Purification Method:
Protein A purification

Clone ID:
241487E11
Reactivity:
human
GenBank:
BC005807
Immunogen Catalog Number:
Ag29156

Conjugate:
Unconjugated
Full name:
stearoyl-CoA desaturase (delta-9-desaturase)
Gene ID:
6319

Applications

Tested Applications:
Cytometric bead array

Range:
0.313-40 ng/mL (Cytometric Bead Array)

Recommended Dilutions:
It is recommended that this reagent should be titrated in each testing system to obtain optimal results.

Product Information

MP01272-2 targets SCD in immunoassays as a matched antibody pair. Validated in Cytometric bead array.

Capture antibody: SCD Recombinant antibody, PBS Only (Capture) 81468-4-PBS (241487F3). 100 μ g. Concentration 1 mg/mL.

Detection antibody: SCD Recombinant antibody, PBS Only (Detector) 81468-3-PBS (241487E11). 100 μ g. Concentration 1 mg/mL.

Alternative SCD matched antibody pairs: MP01272-1

Unconjugated rabbit recombinant monoclonal antibody pair in PBS only storage buffer at a concentration of 1 mg/mL, ready for conjugation. Created using Proteintech's proprietary in-house recombinant technology. Recombinant production enables unrivalled batch-to-batch consistency, easy scale-up, and future security of supply.

Matched antibody pairs are designed for use in a variety of assays and platforms that require matched antibody pairs.

Antibody use should be optimized for each application and assay.

Storage

Storage:
Store at -80°C.
The product is shipped with ice packs. Upon receipt, store it immediately at -80°C
Storage buffer:
PBS only

For technical support and original validation data for this product please contact:

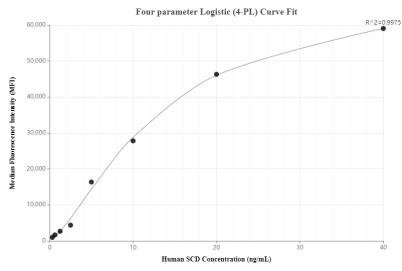
T: 4006900926

E: Proteintech-CN@ptglab.com

W: ptgcn.com

This product is exclusively available under Proteintech Group brand and is not available to purchase from any other manufacturer.

Selected Validation Data



Cytometric bead array standard curve of MP01272-2, SCD Recombinant Matched Antibody Pair, PBS Only. Capture antibody: 81468-4-PBS. Detection antibody: 81468-3-PBS. Standard: Ag29156. Range: 0.313-40 ng/mL