

For Research Use Only

MT-ND5 Recombinant Matched Antibody Pair, PBS Only



Catalog Number:MP01274-1

Capture Antibody Information

Catalog Number:
84441-2-PBS
Host:
Rabbit
Isotype:
IgG
Purification Method:
Protein A purification

Clone ID:
241164F2
Reactivity:
human
GenBank:
YP_003024036
Immunogen Catalog Number:
Ag34495

Conjugate:
Unconjugated
Full name:
NADH dehydrogenase, subunit 5 (complex I)
Gene ID:
4540

Detection Antibody Information

Catalog Number:
84441-1-PBS
Host:
Rabbit
Isotype:
IgG
Purification Method:
Protein A purification

Clone ID:
241164B12
Reactivity:
human
GenBank:
YP_003024036
Immunogen Catalog Number:
Ag34495

Conjugate:
Unconjugated
Full name:
NADH dehydrogenase, subunit 5 (complex I)
Gene ID:
4540

Applications

Tested Applications:
Sandwich ELISA

Range:
6.25-400 ng/mL (Sandwich ELISA)

Recommended Dilutions:
It is recommended that this reagent should be titrated in each testing system to obtain optimal results.

Product Information

MP01274-1 targets MT-ND5 in immunoassays as a matched antibody pair. Validated in Sandwich ELISA.

Capture antibody: ND5 Recombinant antibody, PBS Only (Capture) 84441-2-PBS (241164F2). 100 µg. Concentration 1 mg/ml.

Detection antibody: ND5 Recombinant antibody, PBS Only (Detector) 84441-1-PBS (241164B12). 100 µg. Concentration 1 mg/ml.

Unconjugated rabbit recombinant monoclonal antibody pair in PBS only storage buffer at a concentration of 1 mg/mL, ready for conjugation. Created using Proteintech's proprietary in-house recombinant technology. Recombinant production enables unrivalled batch-to-batch consistency, easy scale-up, and future security of supply.

Matched antibody pairs are designed for use in a variety of assays and platforms that require matched antibody pairs.

Antibody use should be optimized for each application and assay.

Storage

Storage:
Store at -80°C.
The product is shipped with ice packs. Upon receipt, store it immediately at -80°C
Storage buffer:
PBS only

For technical support and original validation data for this product please contact:

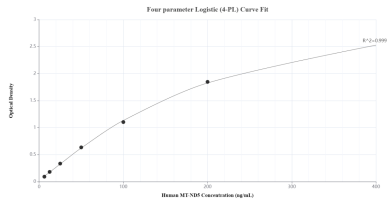
T: 4006900926

E: Proteintech-CN@ptglab.com

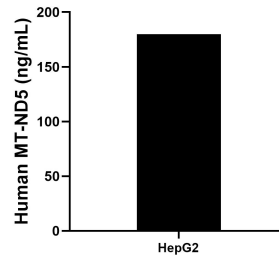
W: ptgcn.com

This product is exclusively available under Proteintech Group brand and is not available to purchase from any other manufacturer.

Selected Validation Data



Sandwich ELISA standard curve of MP01274-1, Human MT-ND5 Recombinant Matched Antibody Pair - PBS only. 84441-2-PBS was coated to a plate as the capture antibody and incubated with serial dilutions of standard Ag34495. 84441-1-PBS was HRP conjugated as the detection antibody. Range: 6.25-400 ng/mL.



The mean MT-ND5 concentration was determined to be 179.79 ng/mL in HepG2 cell extract based on a 5.00 mg/mL extract load.