

For Research Use Only



# Mouse Myeloperoxidase Recombinant Matched Antibody Pair, PBS Only

Catalog Number:MP01284-4

## Capture Antibody Information

Catalog Number:  
84436-3-PBS

Host:  
Rabbit

Isotype:  
IgG

Purification Method:  
Protein A purification

Clone ID:  
241839F8

Reactivity:  
mouse

GenBank:  
AAR99349

Conjugate:  
Unconjugated

Full name:  
myeloperoxidase

Gene ID:  
17523

## Detection Antibody Information

Catalog Number:  
84436-4-PBS

Host:  
Rabbit

Isotype:  
IgG

Purification Method:  
Protein A purification

Clone ID:  
241839F3

Reactivity:  
mouse

GenBank:  
AAR99349

Conjugate:  
Unconjugated

Full name:  
myeloperoxidase

Gene ID:  
17523

## Applications

Tested Applications:  
Sandwich ELISA

Range:  
9.77-625 pg/mL (Sandwich ELISA)

Recommended Dilutions:  
It is recommended that this reagent should be titrated in each testing system to obtain optimal results.

## Product Information

MP01284-4 targets Myeloperoxidase in immunoassays as a matched antibody pair. Validated in Sandwich ELISA.

Capture antibody: Mouse Myeloperoxidase Recombinant antibody, PBS Only (Capture/Detector) 84436-3-PBS (241839F8). 100  $\mu$ g. Concentration 1 mg/ml.

Detection antibody: Mouse Mpo Recombinant antibody, PBS Only (Detector) 84436-4-PBS (241839F3). 100  $\mu$ g. Concentration 1 mg/ml.

Alternative Myeloperoxidase matched antibody pairs: MP01284-1, MP01284-2, MP01284-3

Unconjugated rabbit recombinant monoclonal antibody pair in PBS only storage buffer at a concentration of 1 mg/mL, ready for conjugation. Created using Proteintech's proprietary in-house recombinant technology. Recombinant production enables unrivalled batch-to-batch consistency, easy scale-up, and future security of supply.

Matched antibody pairs are designed for use in a variety of assays and platforms that require matched antibody pairs.

Antibody use should be optimized for each application and assay.

## Storage

Storage:

Store at -80°C.

**The product is shipped with ice packs. Upon receipt, store it immediately at -80°C**

Storage buffer:

PBS only

For technical support and original validation data for this product please contact:

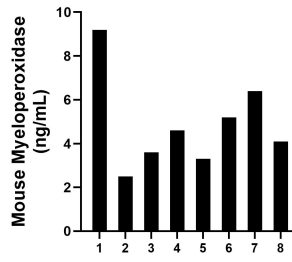
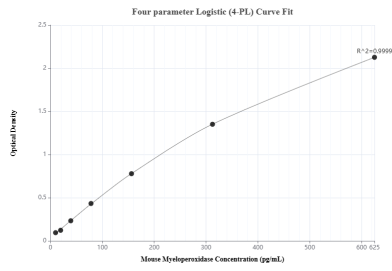
T: 4006900926

E: Proteintech-CN@ptglab.com

W: ptgcn.com

**This product is exclusively available under Proteintech Group brand and is not available to purchase from any other manufacturer.**

## Selected Validation Data



Sandwich ELISA standard curve of MP01284-4, Mouse Myeloperoxidase Recombinant Matched Antibody Pair - PBS only. 84436-3-PBS was coated to a plate as the capture antibody and incubated with serial dilutions of standard Eg0702. 84436-4-PBS was HRP conjugated as the detection antibody. Range: 9.77-625 pg/mL

Serum of eight mice was measured. The mouse Myeloperoxidase concentration of detected samples was determined to be 4.86 ng/mL with a range of 2.54 - 9.19 ng/mL.