

For Research Use Only

TSLP Recombinant Matched Antibody Pair, PBS Only



Catalog Number:MP01287-4

Capture Antibody Information

Catalog Number:
84437-6-PBS

Host:
Rabbit

Isotype:
IgG

Purification Method:
Protein A purification

Clone ID:
241821D6

Reactivity:
human

GenBank:
NM_033035.5

Conjugate:
Unconjugated

Full name:
thymic stromal lymphopietin

Gene ID:
85480

Detection Antibody Information

Catalog Number:
84437-5-PBS

Host:
Rabbit

Isotype:
IgG

Purification Method:
Protein A purification

Clone ID:
241821F10

Reactivity:
human

GenBank:
NM_033035.5

Conjugate:
Unconjugated

Full name:
thymic stromal lymphopietin

Gene ID:
85480

Applications

Tested Applications:
Sandwich ELISA

Range:
9.77-625 pg/mL (Sandwich ELISA)

Recommended Dilutions:
It is recommended that this reagent should be titrated in each testing system to obtain optimal results.

Product Information

MP01287-4 targets TSLP in immunoassays as a matched antibody pair. Validated in Sandwich ELISA.

Capture antibody: TSLP Recombinant antibody, PBS Only (Capture) 84437-6-PBS (241821D6). 100 µg. Concentration 1 mg/ml.

Detection antibody: TSLP Recombinant antibody, PBS Only (Capture/Detector) 84437-5-PBS (241821F10). 100 µg. Concentration 1 mg/ml.

Alternative TSLP matched antibody pairs: MP01287-1, MP01287-2, MP01287-3, MP50325-1, MP50325-2

Unconjugated rabbit recombinant monoclonal antibody pair in PBS only storage buffer at a concentration of 1 mg/mL, ready for conjugation. Created using Proteintech's proprietary in-house recombinant technology. Recombinant production enables unrivalled batch-to-batch consistency, easy scale-up, and future security of supply.

Matched antibody pairs are designed for use in a variety of assays and platforms that require matched antibody pairs.

Antibody use should be optimized for each application and assay.

Storage

Storage:

Store at -80°C.

The product is shipped with ice packs. Upon receipt, store it immediately at -80°C

Storage buffer:

PBS only

For technical support and original validation data for this product please contact:

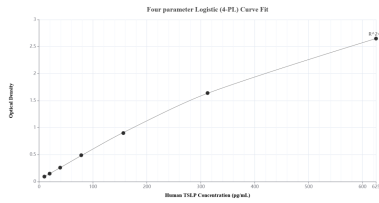
T: 4006900926

E: Proteintech-CN@ptglab.com

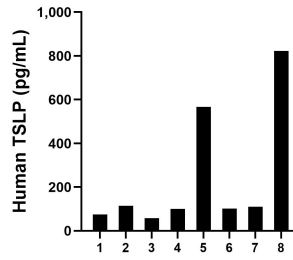
W: ptgcn.com

This product is exclusively available under Proteintech Group brand and is not available to purchase from any other manufacturer.

Selected Validation Data



Sandwich ELISA standard curve of MP01287-4, Human TSLP Recombinant Matched Antibody Pair - PBS only. 84437-6-PBS was coated to a plate as the capture antibody and incubated with serial dilutions of standard Eg1238. 84437-5-PBS was HRP conjugated as the detection antibody. Range: 9.77-625 pg/mL



Serum of eight individual healthy human donors was measured. The TSLP concentration of detected samples was determined to be 243.3 pg/mL with a range of 57.6-822.5 pg/mL.