

For Research Use Only

# IL-1 alpha Recombinant Matched Antibody Pair, PBS Only



Catalog Number:MP01289-3

## Capture Antibody Information

|   |   |   |
|---|---|---|
| <b>Catalog Number:</b><br>84411-2-PBS                 | <b>Clone ID:</b><br>241752E8                | <b>Conjugate:</b><br>Unconjugated         |
| <b>Host:</b><br>Rabbit                                | <b>Reactivity:</b><br>human                 | <b>Full name:</b><br>interleukin 1, alpha |
| <b>Isotype:</b><br>IgG                                | <b>GenBank:</b><br>BC013142                 | <b>Gene ID:</b><br>3552                   |
| <b>Purification Method:</b><br>Protein A purification | <b>Immunogen Catalog Number:</b><br>HZ-1320 |   |

## Detection Antibody Information

|   |   |   |
|---|---|---|
| <b>Catalog Number:</b><br>84411-3-PBS                 | <b>Clone ID:</b><br>241752F11               | <b>Conjugate:</b><br>Unconjugated         |
| <b>Host:</b><br>Rabbit                                | <b>Reactivity:</b><br>human                 | <b>Full name:</b><br>interleukin 1, alpha |
| <b>Isotype:</b><br>IgG                                | <b>GenBank:</b><br>BC013142                 | <b>Gene ID:</b><br>3552                   |
| <b>Purification Method:</b><br>Protein A purification | <b>Immunogen Catalog Number:</b><br>HZ-1320 |   |

## Applications

|   |  |   |
|---|--|---|
| <b>Tested Applications:</b><br>Sandwich ELISA | <b>Range:</b><br>9.77-313 pg/mL (Sandwich ELISA) | <b>Recommended Dilutions:</b><br>It is recommended that this reagent should be titrated in each testing system to obtain optimal results. |
|---|--|---|

## Product Information

MP01289-3 targets IL-1 alpha in immunoassays as a matched antibody pair. Validated in Sandwich ELISA.

Capture antibody: IL1A Recombinant antibody, PBS Only (Capture) 84411-2-PBS (241752E8). 100 µg. Concentration 1 mg/ml.

Detection antibody: IL1A Recombinant antibody, PBS Only (Capture/Detector) 84411-3-PBS (241752F11). 100 µg. Concentration 1 mg/ml.

Unconjugated rabbit recombinant monoclonal antibody pair in PBS only storage buffer at a concentration of 1 mg/mL, ready for conjugation. Created using Proteintech's proprietary in-house recombinant technology. Recombinant production enables unrivalled batch-to-batch consistency, easy scale-up, and future security of supply.

Matched antibody pairs are designed for use in a variety of assays and platforms that require matched antibody pairs.

Antibody use should be optimized for each application and assay.

## Storage

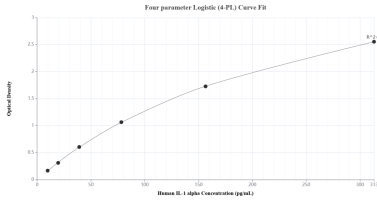
**Storage:**  
Store at -80°C.  
**The product is shipped with ice packs. Upon receipt, store it immediately at -80°C**

**Storage buffer:**  
PBS only

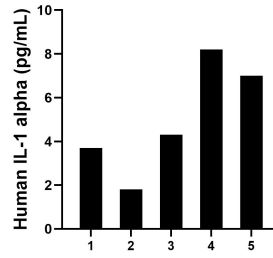
For technical support and original validation data for this product please contact:  
T: 4006900926 E: Proteintech-CN@ptglab.com W: ptgcn.com

**This product is exclusively available under Proteintech Group brand and is not available to purchase from any other manufacturer.**

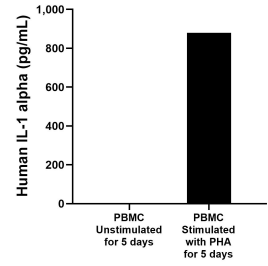
## Selected Validation Data



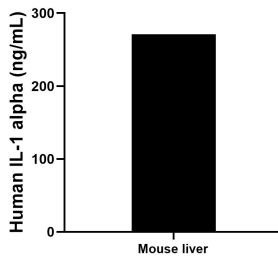
Sandwich ELISA standard curve of MP01289-3, Human IL-1 alpha Recombinant Matched Antibody Pair - PBS only. 84411-2-PBS was coated to a plate as the capture antibody and incubated with serial dilutions of standard HZ-1320. 84411-3-PBS was HRP conjugated as the detection antibody. Range: 9.77-313 pg/mL.



Serum of five individual healthy human donors was measured. The IL-1 alpha concentration of detected samples was determined to be 5.0 pg/mL with a range of 1.8-8.2 pg/mL.



Human peripheral blood mononuclear cells (PBMC) were cultured unstimulated or stimulated with 10  $\mu$ g/mL PHA for 5 days. The mean IL-1 alpha concentration was determined to be 2.1 pg/mL in unstimulated PBMC supernatant, 880.0 pg/mL in PHA stimulated PBMC supernatant.



The mean IL-1 alpha concentration was determined to be 271.0 ng/mL in mouse liver cell extract based on a 3.7 mg/mL extract load.