

DDR1 Recombinant Matched Antibody Pair, PBS Only

Catalog Number:MP01290-2

Capture Antibody Information

Catalog Number:
84438-2-PBS
Host:
Rabbit
Isotype:
IgG
Purification Method:
Protein A purification

Clone ID:
241796C6
Reactivity:
human
GenBank:
NM_001297654.2

Conjugate:
Unconjugated
Full name:
discoidin domain receptor tyrosine kinase 1
Gene ID:
780

Detection Antibody Information

Catalog Number:
84438-1-PBS
Host:
Rabbit
Isotype:
IgG
Purification Method:
Protein A purification

Clone ID:
241796B8
Reactivity:
human
GenBank:
NM_001297654.2

Conjugate:
Unconjugated
Full name:
discoidin domain receptor tyrosine kinase 1
Gene ID:
780

Applications

Tested Applications:
Cytometric bead array

Range:
0.313-40 ng/mL (Cytometric Bead Array)

Recommended Dilutions:
It is recommended that this reagent should be titrated in each testing system to obtain optimal results.

Product Information

MP01290-2 targets DDR1 in immunoassays as a matched antibody pair. Validated in Cytometric bead array.

Capture antibody: DDR1 Recombinant antibody, PBS Only (Capture) 84438-2-PBS (241796C6). 100 µg. Concentration 1 mg/mL.

Detection antibody: DDR1 Recombinant antibody, PBS Only (Detector) 84438-1-PBS (241796B8). 100 µg. Concentration 1 mg/mL.

Alternative DDR1 matched antibody pairs: MP01290-1, MP01290-3

Unconjugated rabbit recombinant monoclonal antibody pair in PBS only storage buffer at a concentration of 1 mg/mL, ready for conjugation. Created using Proteintech's proprietary in-house recombinant technology. Recombinant production enables unrivalled batch-to-batch consistency, easy scale-up, and future security of supply.

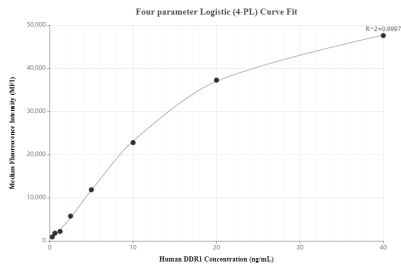
Matched antibody pairs are designed for use in a variety of assays and platforms that require matched antibody pairs.

Antibody use should be optimized for each application and assay.

Storage

Storage:
Store at -80°C.
The product is shipped with ice packs. Upon receipt, store it immediately at -80°C
Storage buffer:
PBS only

Selected Validation Data



Cytometric bead array standard curve of MP01290-2, DDR1 Recombinant Matched Antibody Pair, PBS Only. Capture antibody: 84438-2-PBS. Detection antibody: 84438-1-PBS. Standard: Eg1675. Range: 0.313-40 ng/mL