

M-cadherin Recombinant Matched Antibody Pair, PBS Only

Catalog Number: **MP01295-2**

Capture Antibody Information

Catalog Number:
84440-2-PBS
Host:
Rabbit
Isotype:
IgG
Purification Method:
Protein A purification

Clone ID:
241837B11
Reactivity:
human
GenBank:
BC008951
Immunogen Catalog Number:
Ag25763

Conjugate:
Unconjugated
Full name:
cadherin 15, type 1, M-cadherin (myotubule)
Gene ID:
1013

Detection Antibody Information

Catalog Number:
84440-1-PBS
Host:
Rabbit
Isotype:
IgG
Purification Method:
Protein A purification

Clone ID:
241837A1
Reactivity:
human
GenBank:
BC008951
Immunogen Catalog Number:
Ag25763

Conjugate:
Unconjugated
Full name:
cadherin 15, type 1, M-cadherin (myotubule)
Gene ID:
1013

Applications

Tested Applications:
Cytometric bead array

Range:
0.313-40 ng/mL (Cytometric Bead Array)

Recommended Dilutions:
It is recommended that this reagent should be titrated in each testing system to obtain optimal results.

Product Information

MP01295-2 targets M-cadherin in immunoassays as a matched antibody pair. Validated in Cytometric bead array.
Capture antibody: CDH15 Recombinant antibody, PBS Only (Capture/Detector) 84440-2-PBS (241837B11). 100 µg. Concentration 1 mg/mL.

Detection antibody: CDH15 Recombinant antibody, PBS Only (Detector) 84440-1-PBS (241837A1). 100 µg. Concentration 1 mg/mL.

Unconjugated rabbit recombinant monoclonal antibody pair in PBS only storage buffer at a concentration of 1 mg/mL, ready for conjugation. Created using Proteintech's proprietary in-house recombinant technology. Recombinant production enables unrivalled batch-to-batch consistency, easy scale-up, and future security of supply.

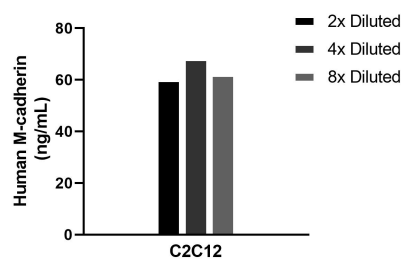
Matched antibody pairs are designed for use in a variety of assays and platforms that require matched antibody pairs.

Antibody use should be optimized for each application and assay.

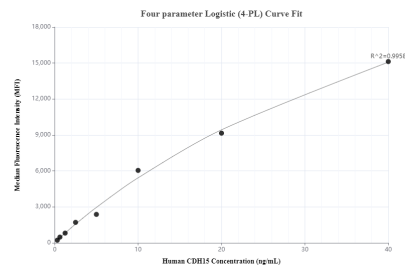
Storage

Storage:
Store at -80°C.
The product is shipped with ice packs. Upon receipt, store it immediately at -80°C
Storage buffer:
PBS only

Selected Validation Data



The mean M-cadherin concentration was determined to be 63.4 ng/mL in C2C12 cell extract based on a 3.0 mg/mL extract load.



Cytometric bead array standard curve of MP01295-2, M-cadherin Recombinant Matched Antibody Pair, PBS Only. Capture antibody: 84440-2-PBS. Detection antibody: 84440-1-PBS. Standard: Ag25763. Range: 0.313-40 ng/mL.