

For Research Use Only

Mouse CD157 Recombinant Matched Antibody Pair, PBS Only



Catalog Number:MP01303-4

Capture Antibody Information

Catalog Number:
84417-4-PBS
Host:
Rabbit
Isotype:
IgG
Purification Method:
Protein A purification

Clone ID:
241822H1
Reactivity:
mouse
GenBank:
Immunogen Catalog Number:
Eg1528

Conjugate:
Unconjugated
Full name:
bone marrow stromal cell antigen 1
Gene ID:
12182

Detection Antibody Information

Catalog Number:
84417-1-PBS
Host:
Rabbit
Isotype:
IgG
Purification Method:
Protein A purification

Clone ID:
241822A5
Reactivity:
mouse
GenBank:
Immunogen Catalog Number:
Eg1528

Conjugate:
Unconjugated
Full name:
bone marrow stromal cell antigen 1
Gene ID:
12182

Applications

Tested Applications:
Sandwich ELISA

Range:
48.8-1563 pg/mL (Sandwich ELISA)

Recommended Dilutions:
It is recommended that this reagent should be titrated in each testing system to obtain optimal results.

Product Information

MP01303-4 targets CD157 in immunoassays as a matched antibody pair. Validated in Sandwich ELISA.

Capture antibody: Mouse CD157 Recombinant antibody, PBS Only (Capture/Detector) 84417-4-PBS (241822H1). 100 μ g. Concentration 1 mg/mL.

Detection antibody: Mouse CD157 Recombinant antibody, PBS Only (Capture/Detector) 84417-1-PBS (241822A5). 100 μ g. Concentration 1 mg/mL.

Unconjugated rabbit recombinant monoclonal antibody pair in PBS only storage buffer at a concentration of 1 mg/mL, ready for conjugation. Created using Proteintech's proprietary in-house recombinant technology. Recombinant production enables unrivalled batch-to-batch consistency, easy scale-up, and future security of supply.

Matched antibody pairs are designed for use in a variety of assays and platforms that require matched antibody pairs.

Antibody use should be optimized for each application and assay.

Storage

Storage:
Store at -80°C.
The product is shipped with ice packs. Upon receipt, store it immediately at -80°C
Storage buffer:
PBS only

For technical support and original validation data for this product please contact:

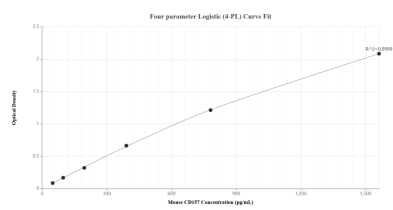
T: 4006900926

E: Proteintech-CN@ptglab.com

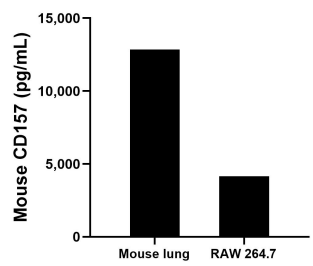
W: ptgcn.com

This product is exclusively available under Proteintech Group brand and is not available to purchase from any other manufacturer.

Selected Validation Data



Sandwich ELISA standard curve of MP01303-4, Mouse CD157 Recombinant Matched Antibody Pair - PBS only. 84417-4-PBS was coated to a plate as the capture antibody and incubated with serial dilutions of standard Eg1528. 84417-1-PBS was HRP conjugated as the detection antibody. Range: 48.8-1563 pg/mL.



The mean CD157 concentration was determined to be 12,854.1 pg/mL in mouse lung tissue extract based on a 1.6 mg/mL extract load and 4,152.4 pg/mL in RAW 264.7 cell extract based on a 4.8 mg/mL extract load.