

For Research Use Only



# ACVRL1 Recombinant Matched Antibody Pair, PBS Only

Catalog Number:MP01306-2

## Capture Antibody Information

Catalog Number:  
84421-1-PBS

Host:  
Rabbit

Isotype:  
IgG

Purification Method:  
Protein A purification

Clone ID:  
241686B9

Reactivity:  
human

GenBank:  
BC042637

Conjugate:  
Unconjugated

Full name:  
activin A receptor type II-like 1

Gene ID:  
94

## Detection Antibody Information

Catalog Number:  
84421-2-PBS

Host:  
Rabbit

Isotype:  
IgG

Purification Method:  
Protein A purification

Clone ID:  
241686D9

Reactivity:  
human

GenBank:  
BC042637

Conjugate:  
Unconjugated

Full name:  
activin A receptor type II-like 1

Gene ID:  
94

## Applications

Tested Applications:  
Sandwich ELISA

Range:  
0.781-50 ng/mL (Sandwich ELISA)

Recommended Dilutions:  
It is recommended that this reagent should be titrated in each testing system to obtain optimal results.

## Product Information

MP01306-2 targets ACVRL1 in immunoassays as a matched antibody pair. Validated in Sandwich ELISA.

Capture antibody: ACVRL1 Recombinant antibody, PBS Only (Capture/Detector) 84421-1-PBS (241686B9). 100 µg. Concentration 1 mg/ml.

Detection antibody: ACVRL1 Recombinant antibody, PBS Only (Capture/Detector) 84421-2-PBS (241686D9). 100 µg. Concentration 1 mg/ml.

Alternative ACVRL1 matched antibody pairs: MP01306-1

Unconjugated rabbit recombinant monoclonal antibody pair in PBS only storage buffer at a concentration of 1 mg/mL, ready for conjugation. Created using Proteintech's proprietary in-house recombinant technology. Recombinant production enables unrivalled batch-to-batch consistency, easy scale-up, and future security of supply.

Matched antibody pairs are designed for use in a variety of assays and platforms that require matched antibody pairs.

Antibody use should be optimized for each application and assay.

## Storage

Storage:  
Store at -80°C.  
**The product is shipped with ice packs. Upon receipt, store it immediately at -80°C**  
Storage buffer:  
PBS only

For technical support and original validation data for this product please contact:

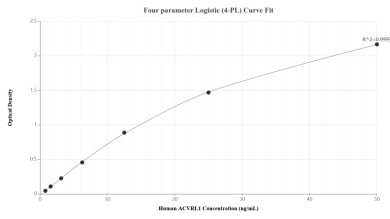
T: 4006900926

E: Proteintech-CN@ptglab.com

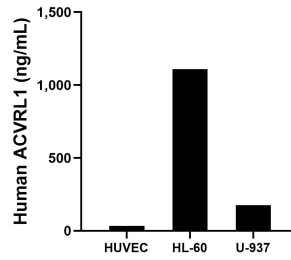
W: ptgcn.com

**This product is exclusively available under Proteintech Group brand and is not available to purchase from any other manufacturer.**

## Selected Validation Data



Sandwich ELISA standard curve of MP01306-2, Human ACVRL1 Recombinant Matched Antibody Pair - PBS only. 84421-1-PBS was coated to a plate as the capture antibody and incubated with serial dilutions of standard Eg2132. 84421-2-PBS was HRP conjugated as the detection antibody. Range: 0.781-50 ng/mL



The mean ACVRL1 concentration was determined to be 34.48 ng/mL in HUVEC cell extract based on a 0.91 mg/mL extract load, 1108.74 ng/mL in HL-60 cell extract based on a 3.00 mg/mL extract load and 176.59 ng/mL in U-937 cell extract based on a 1.40 mg/mL extract load.