

For Research Use Only

Neuropilin 1 Recombinant Matched Antibody Pair, PBS Only



Catalog Number:MP01310-4

Capture Antibody Information

Catalog Number:
84429-2-PBS

Host:
Rabbit

Isotype:
IgG

Purification Method:
Protein A purification

Clone ID:
241812B7

Reactivity:
human

GenBank:
BC007533

Conjugate:
Unconjugated

Full name:
neuropilin 1

Gene ID:
8829

Detection Antibody Information

Catalog Number:
84429-4-PBS

Host:
Rabbit

Isotype:
IgG

Purification Method:
Protein A purification

Clone ID:
241812E11

Reactivity:
human

GenBank:
BC007533

Conjugate:
Unconjugated

Full name:
neuropilin 1

Gene ID:
8829

Applications

Tested Applications:
Sandwich ELISA

Range:
78.1-5000 pg/mL (Sandwich ELISA)

Recommended Dilutions:
It is recommended that this reagent should be titrated in each testing system to obtain optimal results.

Product Information

MP01310-4 targets Neuropilin 1 in immunoassays as a matched antibody pair. Validated in Sandwich ELISA.

Capture antibody: NRP1 Recombinant antibody, PBS Only (Capture) 84429-2-PBS (241812B7). 100 μ g. Concentration 1 mg/ml.

Detection antibody: NRP1 Recombinant antibody, PBS Only (Capture/Detector) 84429-4-PBS (241812E11). 100 μ g. Concentration 1 mg/ml.

Unconjugated rabbit recombinant monoclonal antibody pair in PBS only storage buffer at a concentration of 1 mg/mL, ready for conjugation. Created using Proteintech's proprietary in-house recombinant technology. Recombinant production enables unrivalled batch-to-batch consistency, easy scale-up, and future security of supply.

Matched antibody pairs are designed for use in a variety of assays and platforms that require matched antibody pairs.

Antibody use should be optimized for each application and assay.

Storage

Storage:

Store at -80°C.

The product is shipped with ice packs. Upon receipt, store it immediately at -80°C

Storage buffer:

PBS only

For technical support and original validation data for this product please contact:

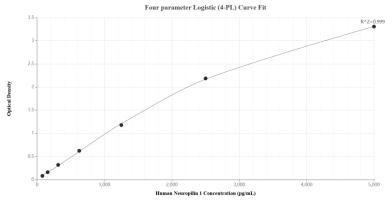
T: 4006900926

E: Proteintech-CN@ptglab.com

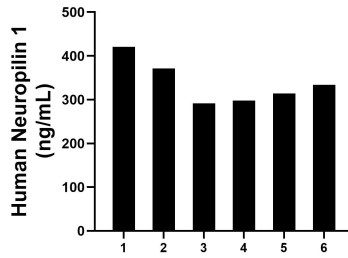
W: ptgcn.com

This product is exclusively available under Proteintech Group brand and is not available to purchase from any other manufacturer.

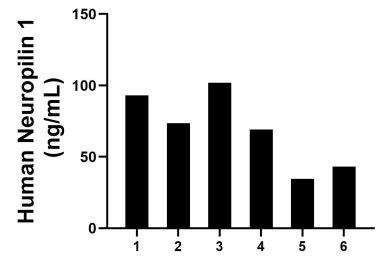
Selected Validation Data



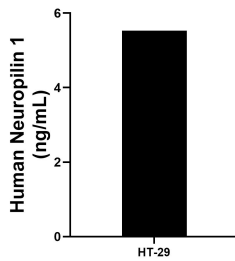
Sandwich ELISA standard curve of MP01310-4, Human Neuropilin 1 Recombinant Matched Antibody Pair - PBS only. 84429-2-PBS was coated to a plate as the capture antibody and incubated with serial dilutions of standard Eg2331. 84429-4-PBS was HRP conjugated as the detection antibody. Range: 78.1-5000 pg/mL



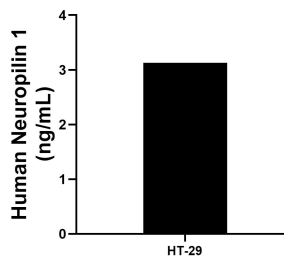
Serum of six individual healthy human donors was measured. The Neuropilin 1 concentration of detected samples was determined to be 338.2 ng/mL with a range of 291.5-420.8 ng/mL.



Human milk of six individual healthy human donors was measured. The Neuropilin 1 concentration of detected samples was determined to be 69.2 ng/mL with a range of 34.6-102.0 ng/mL.



The mean Neuropilin 1 concentration was determined to be 5.5 ng/mL in HT-29 cell extract based on a 1.5 mg/mL extract load.



HT-29 were cultured in DMEM supplemented with 10% fetal bovine serum, 2.5 mM L-glutamine, 100 U/mL penicillin, and 100 μ g/mL streptomycin sulfate. An aliquot of the cell culture supernate was removed, assayed for human Neuropilin 1, and measured 3.1 ng/mL.