

For Research Use Only

Mouse CD147 Recombinant Matched Antibody Pair, PBS Only



Catalog Number: MP01320-4

Capture Antibody Information

Catalog Number:
84488-5-PBS

Host:
Rabbit

Isotype:
IgG

Purification Method:
Protein A purification

Clone ID:
241852B10

Reactivity:
mouse

GenBank:
NM_009768.2

Conjugate:
Unconjugated

Full name:
basigin

Gene ID:
12215

Detection Antibody Information

Catalog Number:
84488-4-PBS

Host:
Rabbit

Isotype:
IgG

Purification Method:
Protein A purification

Clone ID:
241852H7

Reactivity:
mouse

GenBank:
NM_009768.2

Conjugate:
Unconjugated

Full name:
basigin

Gene ID:
12215

Applications

Tested Applications:
Sandwich ELISA

Range:
78.1-5000 pg/mL (Sandwich ELISA)

Recommended Dilutions:
It is recommended that this reagent should be titrated in each testing system to obtain optimal results.

Product Information

MP01320-4 targets CD147 in immunoassays as a matched antibody pair. Validated in Sandwich ELISA.

Capture antibody: Mouse EMMPRIN/CD147 Recombinant antibody, PBS Only (Capture) 84488-5-PBS (241852B10). 100 µg. Concentration 1 mg/ml.

Detection antibody: Mouse EMMPRIN/CD147 Recombinant antibody, PBS Only (Detector) 84488-4-PBS (241852H7). 100 µg. Concentration 1 mg/ml.

Unconjugated rabbit recombinant monoclonal antibody pair in PBS only storage buffer at a concentration of 1 mg/mL, ready for conjugation. Created using Proteintech's proprietary in-house recombinant technology. Recombinant production enables unrivalled batch-to-batch consistency, easy scale-up, and future security of supply.

Matched antibody pairs are designed for use in a variety of assays and platforms that require matched antibody pairs.

Antibody use should be optimized for each application and assay.

Storage

Storage:

Store at -80°C.

The product is shipped with ice packs. Upon receipt, store it immediately at -80°C

Storage buffer:

PBS only

For technical support and original validation data for this product please contact:

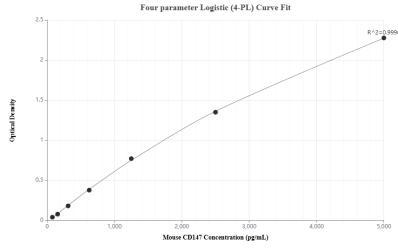
T: 4006900926

E: Proteintech-CN@ptglab.com

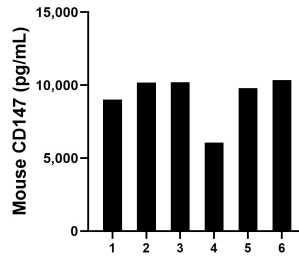
W: ptgcn.com

This product is exclusively available under Proteintech Group brand and is not available to purchase from any other manufacturer.

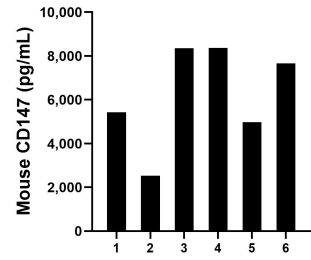
Selected Validation Data



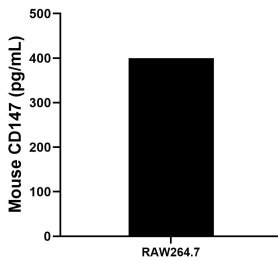
Sandwich ELISA standard curve of MP01320-4, Mouse CD147 Recombinant Matched Antibody Pair - PBS only. 84488-5-PBS was coated to a plate as the capture antibody and incubated with serial dilutions of standard Eg1530. 84488-4-PBS was HRP conjugated as the detection antibody. Range: 78.1-5000 pg/mL



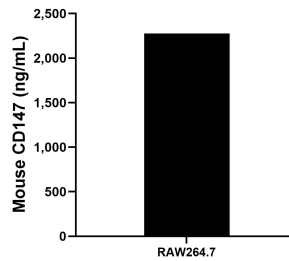
Serum of six mice was measured. The mouse CD147 concentration of detected samples was determined to be 9,267.4 pg/mL with a range of 6,072.1 - 10,344.1 pg/mL



Urine of six mice was measured. The mouse CD147 concentration of detected samples was determined to be 6,220.5 pg/mL with a range of 2,528.0 - 8372.5 pg/mL



RAW264.7 cells were cultured in DMEM supplemented with 10% fetal bovine serum. An aliquot of the cell culture supernate was removed, assayed for mouse CD147, and measured 400.0 pg/mL



The mean CD147 concentration was determined to be 2,277.8 ng/mL in RAW264.7 cell extract based on a 4.8 mg/mL extract load.