

DRD1 Recombinant Matched Antibody Pair, PBS Only

Catalog Number:MP01326-1

Capture Antibody Information

Catalog Number:
83037-5-PBS

Host:
Rabbit

Isotype:
IgG

Purification Method:
Protein A purification

Clone ID:
241782B12

Reactivity:
human

GenBank:
BC074978

Immunogen Catalog Number:
Ag12366

Conjugate:
Unconjugated

Full name:
dopamine receptor D1

Gene ID:
1812

Detection Antibody Information

Catalog Number:
83037-7-PBS

Host:
Rabbit

Isotype:
IgG

Purification Method:
Protein A purification

Clone ID:
241782E9

Reactivity:
human

GenBank:
BC074978

Immunogen Catalog Number:
Ag12366

Conjugate:
Unconjugated

Full name:
dopamine receptor D1

Gene ID:
1812

Applications

Tested Applications:
Cytometric bead array

Range:
0.313-40 ng/mL (Cytometric Bead Array)

Recommended Dilutions:
It is recommended that this reagent should be titrated in each testing system to obtain optimal results.

Product Information

MP01326-1 targets DRD1 in immunoassays as a matched antibody pair. Validated in Cytometric bead array.

Capture antibody: DRD1 Recombinant antibody, PBS Only (Capture) 83037-5-PBS (241782B12). 100 µg. Concentration 1 mg/ml.

Detection antibody: DRD1 Recombinant antibody, PBS Only (Detector) 83037-7-PBS (241782E9). 100 µg. Concentration 1 mg/ml.

Alternative DRD1 matched antibody pairs: MP01326-2

Unconjugated rabbit recombinant monoclonal antibody pair in PBS only storage buffer at a concentration of 1 mg/mL, ready for conjugation. Created using Proteintech's proprietary in-house recombinant technology. Recombinant production enables unrivalled batch-to-batch consistency, easy scale-up, and future security of supply.

Matched antibody pairs are designed for use in a variety of assays and platforms that require matched antibody pairs.

Antibody use should be optimized for each application and assay.

Storage

Storage:

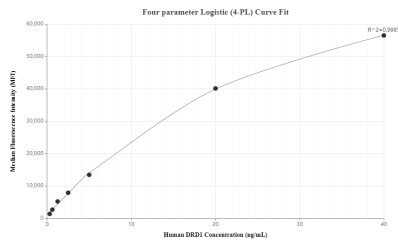
Store at -80°C.

The product is shipped with ice packs. Upon receipt, store it immediately at -80°C

Storage buffer:

PBS only

Selected Validation Data



Cytometric bead array standard curve of MP01326-1, DRD1 Recombinant Matched Antibody Pair, PBS Only. Capture antibody: 83037-5-PBS. Detection antibody: 83037-7-PBS. Standard: Ag12366. Range: 0.313-40 ng/mL