

DRD1 Recombinant Matched Antibody Pair, PBS Only

Catalog Number:MP01326-3

Capture Antibody Information

Catalog Number: 83037-7-PBS	Clone ID: 241782E9	Conjugate: Unconjugated
Host: Rabbit	Reactivity: human	Full name: dopamine receptor D1
Isotype: IgG	GenBank: BC074978	Gene ID: 1812
Purification Method: Protein A purification	Immunogen Catalog Number: Ag12366	

Detection Antibody Information

Catalog Number: 83037-8-PBS	Clone ID: 241782G1	Conjugate: Unconjugated
Host: Rabbit	Reactivity: human	Full name: dopamine receptor D1
Isotype: IgG	GenBank: BC074978	Gene ID: 1812
Purification Method: Protein A purification	Immunogen Catalog Number: Ag12366	

Applications

Tested Applications: Sandwich ELISA	Range: 0.156-10 ng/mL (Sandwich ELISA)	Recommended Dilutions: It is recommended that this reagent should be titrated in each testing system to obtain optimal results.
---	--	---

Product Information

MP01326-3 targets DRD1 in immunoassays as a matched antibody pair. Validated in Sandwich ELISA.

Capture antibody: DRD1 Recombinant antibody, PBS Only (Capture/Detector) 83037-7-PBS (241782E9). 100 µg. Concentration 1 mg/ml.

Detection antibody: DRD1 Recombinant antibody, PBS Only (Detector) 83037-8-PBS (241782G1). 100 µg. Concentration 1 mg/ml.

Alternative DRD1 matched antibody pairs: MP01326-1, MP01326-2

Unconjugated rabbit recombinant monoclonal antibody pair in PBS only storage buffer at a concentration of 1 mg/mL, ready for conjugation. Created using Proteintech's proprietary in-house recombinant technology. Recombinant production enables unrivalled batch-to-batch consistency, easy scale-up, and future security of supply.

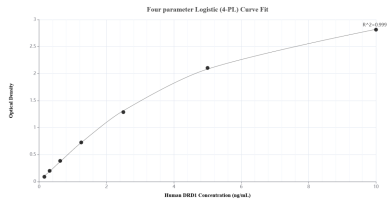
Matched antibody pairs are designed for use in a variety of assays and platforms that require matched antibody pairs.

Antibody use should be optimized for each application and assay.

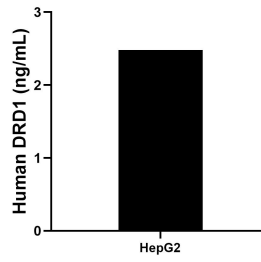
Storage

Storage:
Store at -80°C.
The product is shipped with ice packs. Upon receipt, store it immediately at -80°C
Storage buffer:
PBS only

Selected Validation Data



Sandwich ELISA standard curve of MP01326-3, Human DRD1 Recombinant Matched Antibody Pair - PBS only. 83037-7-PBS was coated to a plate as the capture antibody and incubated with serial dilutions of standard Ag12366. 83037-8-PBS was HRP conjugated as the detection antibody. Range: 0.156-10 ng/mL.



The mean DRD1 concentration was determined to be 2.48 ng/mL in HepG2 cell extract based on a 2.30 mg/mL extract load.