

For Research Use Only

Integrin beta-6 Recombinant Matched Antibody Pair, PBS Only



Catalog Number:MP01331-4

Capture Antibody Information

Catalog Number:
84475-5-PBS

Host:
Rabbit

Isotype:
IgG

Purification Method:
Protein A purification

Clone ID:
241877H5

Reactivity:
human

GenBank:
BC121178

Immunogen Catalog Number:
Ag29002

Conjugate:
Unconjugated

Full name:
integrin, beta 6

Gene ID:
3694

Detection Antibody Information

Catalog Number:
84475-4-PBS

Host:
Rabbit

Isotype:
IgG

Purification Method:
Protein A purification

Clone ID:
241877F2

Reactivity:
human

GenBank:
BC121178

Immunogen Catalog Number:
Ag29002

Conjugate:
Unconjugated

Full name:
integrin, beta 6

Gene ID:
3694

Applications

Tested Applications:
Sandwich ELISA

Range:
0.313-10 ng/mL (Sandwich ELISA)

Recommended Dilutions:
It is recommended that this reagent should be titrated in each testing system to obtain optimal results.

Product Information

MP01331-4 targets Integrin beta-6 in immunoassays as a matched antibody pair. Validated in Sandwich ELISA.

Capture antibody: Integrin beta-6 Recombinant antibody, PBS Only (Capture) 84475-5-PBS (241877H5). 100 µg. Concentration 1 mg/ml.

Detection antibody: Integrin beta-6 Recombinant antibody, PBS Only (Detector) 84475-4-PBS (241877F2). 100 µg. Concentration 1 mg/ml.

Unconjugated rabbit recombinant monoclonal antibody pair in PBS only storage buffer at a concentration of 1 mg/mL, ready for conjugation. Created using Proteintech's proprietary in-house recombinant technology. Recombinant production enables unrivalled batch-to-batch consistency, easy scale-up, and future security of supply.

Matched antibody pairs are designed for use in a variety of assays and platforms that require matched antibody pairs.

Antibody use should be optimized for each application and assay.

Storage

Storage:
Store at -80°C.

The product is shipped with ice packs. Upon receipt, store it immediately at -80°C

Storage buffer:
PBS only

For technical support and original validation data for this product please contact:

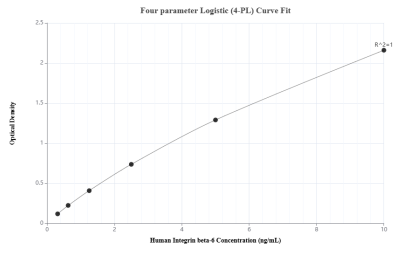
T: 4006900926

E: Proteintech-CN@ptglab.com

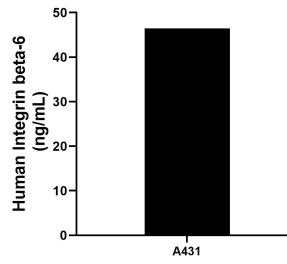
W: ptgcn.com

This product is exclusively available under Proteintech Group brand and is not available to purchase from any other manufacturer.

Selected Validation Data



Sandwich ELISA standard curve of MP01331-4, Human Integrin beta-6 Recombinant Matched Antibody Pair - PBS only. 84475-5-PBS was coated to a plate as the capture antibody and incubated with serial dilutions of standard Ag29002. 84475-4-PBS was HRP conjugated as the detection antibody. Range: 0.313-10 ng/mL



The mean Integrin beta-6 concentration was determined to be 46.45 ng/mL in A431 cell extract based on a 1.3 mg/mL extract load.