

For Research Use Only

LEPR Recombinant Matched Antibody Pair, PBS Only



Catalog Number:MP01335-3

Capture Antibody Information

Catalog Number:
84464-5-PBS

Host:
Rabbit

Isotype:
IgG

Purification Method:
Protein A purification

Clone ID:
241692E6

Reactivity:
human

GenBank:
NM_002303

Conjugate:
Unconjugated

Full name:
leptin receptor

Gene ID:
3953

Detection Antibody Information

Catalog Number:
84464-2-PBS

Host:
Rabbit

Isotype:
IgG

Purification Method:
Protein A purification

Clone ID:
241692F11

Reactivity:
human

GenBank:
NM_002303

Conjugate:
Unconjugated

Full name:
leptin receptor

Gene ID:
3953

Applications

Tested Applications:
Sandwich ELISA

Range:
0.156-10 ng/mL (Sandwich ELISA)

Recommended Dilutions:
It is recommended that this reagent should be titrated in each testing system to obtain optimal results.

Product Information

MP01335-3 targets LEPR in immunoassays as a matched antibody pair. Validated in Sandwich ELISA.

Capture antibody: LEPR Recombinant antibody, PBS Only (Capture) 84464-5-PBS (241692E6). 100 μ g. Concentration 1 mg/mL.

Detection antibody: LEPR Recombinant antibody, PBS Only (Detector) 84464-2-PBS (241692F11). 100 μ g. Concentration 1 mg/mL.

Alternative LEPR matched antibody pairs: MP01335-1, MP01335-2, MP50066-1

Unconjugated rabbit recombinant monoclonal antibody pair in PBS only storage buffer at a concentration of 1 mg/mL, ready for conjugation. Created using Proteintech's proprietary in-house recombinant technology. Recombinant production enables unrivalled batch-to-batch consistency, easy scale-up, and future security of supply.

Matched antibody pairs are designed for use in a variety of assays and platforms that require matched antibody pairs.

Antibody use should be optimized for each application and assay.

Storage

Storage:

Store at -80°C.

The product is shipped with ice packs. Upon receipt, store it immediately at -80°C

Storage buffer:

PBS only

For technical support and original validation data for this product please contact:

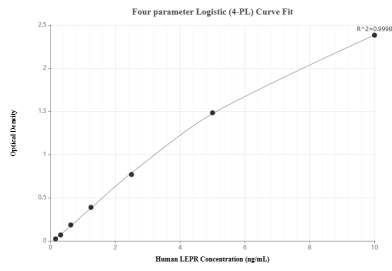
T: 4006900926

E: Proteintech-CN@ptglab.com

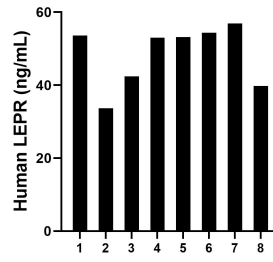
W: ptgcn.com

This product is exclusively available under Proteintech Group brand and is not available to purchase from any other manufacturer.

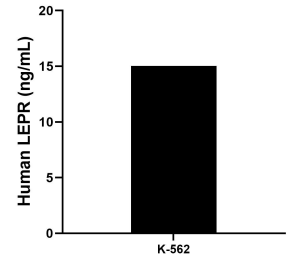
Selected Validation Data



Sandwich ELISA standard curve of MP01335-3, Human LEPR Recombinant Matched Antibody Pair - PBS only. 84464-5-PBS was coated to a plate as the capture antibody and incubated with serial dilutions of standard RP00010. 84464-2-PBS was HRP conjugated as the detection antibody. Range: 0.156-10 ng/mL



Serum of eight individual healthy human donors was measured. The human LEPR concentration of detected samples was determined to be 48.36 ng/mL with a range of 33.62 - 56.93 ng/mL



The mean LEPR concentration was determined to be 15.03 ng/mL in K-562 cell extract based on a 2.1 mg/mL extract load.