

For Research Use Only

CD100 Recombinant Matched Antibody Pair, PBS Only



Catalog Number:MP01337-3

Capture Antibody Information

Catalog Number:
84465-3-PBS

Host:
Rabbit

Isotype:
IgG

Purification Method:
Protein A purification

Clone ID:
241709D5

Reactivity:
human

GenBank:
BC054500

Conjugate:
Unconjugated

Full name:
sema domain, immunoglobulin domain (Ig), transmembrane domain (TM) and short cytoplasmic domain, (semaphorin) 4D

Gene ID:
10507

Detection Antibody Information

Catalog Number:
84465-6-PBS

Host:
Rabbit

Isotype:
IgG

Purification Method:
Protein A purification

Clone ID:
241708F11

Reactivity:
human

GenBank:
BC054500

Conjugate:
Unconjugated

Full name:
sema domain, immunoglobulin domain (Ig), transmembrane domain (TM) and short cytoplasmic domain, (semaphorin) 4D

Gene ID:
10507

Applications

Tested Applications:
Sandwich ELISA

Range:
39.1-2500 pg/mL (Sandwich ELISA)

Recommended Dilutions:
It is recommended that this reagent should be titrated in each testing system to obtain optimal results.

Product Information

MP01337-3 targets CD100 in immunoassays as a matched antibody pair. Validated in Sandwich ELISA.

Capture antibody: CD100 Recombinant antibody, PBS Only (Capture/Detector) 84465-3-PBS (241709D5). 100 µg. Concentration 1 mg/mL.

Detection antibody: CD100 Recombinant antibody, PBS Only (Detector) 84465-6-PBS (241708F11). 100 µg. Concentration 1 mg/mL.

Unconjugated rabbit recombinant monoclonal antibody pair in PBS only storage buffer at a concentration of 1 mg/mL, ready for conjugation. Created using Proteintech's proprietary in-house recombinant technology. Recombinant production enables unrivalled batch-to-batch consistency, easy scale-up, and future security of supply.

Matched antibody pairs are designed for use in a variety of assays and platforms that require matched antibody pairs.

Antibody use should be optimized for each application and assay.

Storage

Storage:
Store at -80°C.

The product is shipped with ice packs. Upon receipt, store it immediately at -80°C

Storage buffer:
PBS only

For technical support and original validation data for this product please contact:

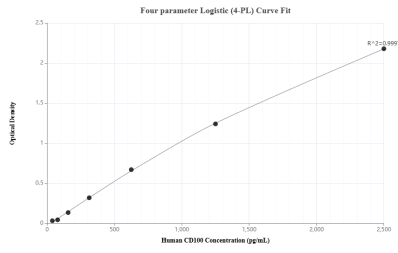
T: 4006900926

E: Proteintech-CN@ptglab.com

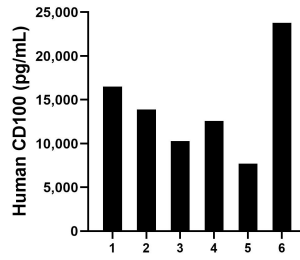
W: ptgcn.com

This product is exclusively available under Proteintech Group brand and is not available to purchase from any other manufacturer.

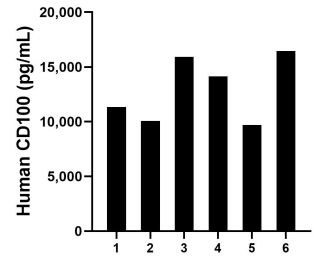
Selected Validation Data



Sandwich ELISA standard curve of MP01337-3, Human CD100 Recombinant Matched Antibody Pair - PBS only. 84465-3-PBS was coated to a plate as the capture antibody and incubated with serial dilutions of standard RPO2354. 84465-6-PBS was HRP conjugated as the detection antibody. Range: 39.1-2500 pg/mL



Serum of six individual healthy human donors was measured. The human CD100 concentration of detected samples was determined to be 14,122.6 pg/mL with a range of 7,698.6 - 23,788.0 pg/mL.



Plasma of six individual healthy human donors was measured. The human CD100 concentration of detected samples was determined to be 12,939.0 pg/mL with a range of 9,708.2 - 16,458.0 pg/mL.