

For Research Use Only

# SLC1A3 Recombinant Matched Antibody Pair, PBS Only



Catalog Number:MP01339-2

## Capture Antibody Information

**Catalog Number:**  
84497-1-PBS  
**Host:**  
Rabbit  
**Isotype:**  
IgG  
**Purification Method:**  
Protein A purification

**Clone ID:**  
241907A9  
**Reactivity:**  
human  
**GenBank:**  
BC037310  
**Immunogen Catalog Number:**  
Ag16962

**Conjugate:**  
Unconjugated  
**Full name:**  
solute carrier family 1 (glial high affinity glutamate transporter), member 3  
**Gene ID:**  
6507

## Detection Antibody Information

**Catalog Number:**  
84497-3-PBS  
**Host:**  
Rabbit  
**Isotype:**  
IgG  
**Purification Method:**  
Protein A purification

**Clone ID:**  
241907E8  
**Reactivity:**  
human  
**GenBank:**  
BC037310  
**Immunogen Catalog Number:**  
Ag16962

**Conjugate:**  
Unconjugated  
**Full name:**  
solute carrier family 1 (glial high affinity glutamate transporter), member 3  
**Gene ID:**  
6507

## Applications

**Tested Applications:**  
Cytometric bead array

**Range:**  
0.625-40 ng/mL (Cytometric Bead Array)

**Recommended Dilutions:**  
It is recommended that this reagent should be titrated in each testing system to obtain optimal results.

## Product Information

MP01339-2 targets SLC1A3 in immunoassays as a matched antibody pair. Validated in Cytometric bead array.  
Capture antibody: SLC1A3 Recombinant antibody, PBS Only (Capture/Detector) 84497-1-PBS (241907A9). 100 µg. Concentration 1 mg/ml.

Detection antibody: SLC1A3 Recombinant antibody, PBS Only (Detector) 84497-3-PBS (241907E8). 100 µg. Concentration 1 mg/ml.

Alternative SLC1A3 matched antibody pairs: MP01339-1

Unconjugated rabbit recombinant monoclonal antibody pair in PBS only storage buffer at a concentration of 1 mg/mL, ready for conjugation. Created using Proteintech's proprietary in-house recombinant technology. Recombinant production enables unrivalled batch-to-batch consistency, easy scale-up, and future security of supply.

Matched antibody pairs are designed for use in a variety of assays and platforms that require matched antibody pairs.

Antibody use should be optimized for each application and assay.

## Storage

**Storage:**  
Store at -80°C.  
**The product is shipped with ice packs. Upon receipt, store it immediately at -80°C**  
**Storage buffer:**  
PBS only

For technical support and original validation data for this product please contact:

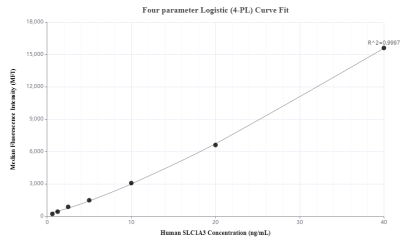
T: 4006900926

E: [Proteintech-CN@ptglab.com](mailto:Proteintech-CN@ptglab.com)

W: [ptgcn.com](http://ptgcn.com)

**This product is exclusively available under Proteintech Group brand and is not available to purchase from any other manufacturer.**

## Selected Validation Data



Cytometric bead array standard curve of MP01339-2, GLAST Recombinant Matched Antibody Pair, PBS Only. Capture antibody: 84497-1-PBS. Detection antibody: 84497-3-PBS. Standard: Ag16962. Range: 0.625-40 ng/mL.