

For Research Use Only

LBR Recombinant Matched Antibody Pair, PBS Only



Catalog Number:MP01373-3

Capture Antibody Information

Catalog Number:
84522-1-PBS
Host:
Rabbit
Isotype:
IgG
Purification Method:
Protein A purification

Clone ID:
241864B4
Reactivity:
human
GenBank:
BC020079
Immunogen Catalog Number:
Ag3088

Conjugate:
Unconjugated
Full name:
lamin B receptor
Gene ID:
3930

Detection Antibody Information

Catalog Number:
84522-5-PBS
Host:
Rabbit
Isotype:
IgG
Purification Method:
Protein A purification

Clone ID:
241864E11
Reactivity:
human
GenBank:
BC020079
Immunogen Catalog Number:
Ag3088

Conjugate:
Unconjugated
Full name:
lamin B receptor
Gene ID:
3930

Applications

Tested Applications:
Sandwich ELISA

Range:
0.195-12.5 ng/mL (Sandwich ELISA)

Recommended Dilutions:
It is recommended that this reagent should be titrated in each testing system to obtain optimal results.

Product Information

MP01373-3 targets LBR in immunoassays as a matched antibody pair. Validated in Sandwich ELISA.
Capture antibody: LBR Recombinant antibody, PBS Only (Capture) 84522-1-PBS (241864B4). 100 µg. Concentration 1 mg/mL.
Detection antibody: LBR Recombinant antibody, PBS Only (Detector) 84522-5-PBS (241864E11). 100 µg. Concentration 1 mg/mL.
Alternative LBR matched antibody pairs: MP01373-1, MP01373-2
Unconjugated rabbit recombinant monoclonal antibody pair in PBS only storage buffer at a concentration of 1 mg/mL, ready for conjugation. Created using Proteintech's proprietary in-house recombinant technology. Recombinant production enables unrivalled batch-to-batch consistency, easy scale-up, and future security of supply. Matched antibody pairs are designed for use in a variety of assays and platforms that require matched antibody pairs.
Antibody use should be optimized for each application and assay.

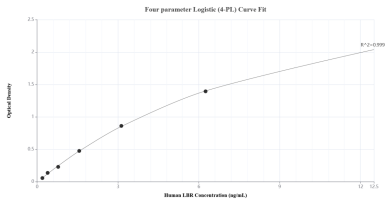
Storage

Storage:
Store at -80°C.
The product is shipped with ice packs. Upon receipt, store it immediately at -80°C
Storage buffer:
PBS only

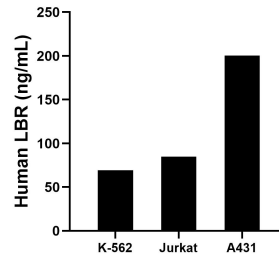
For technical support and original validation data for this product please contact:
T: 4006900926 E: Proteintech-CN@ptglab.com W: ptgcn.com

This product is exclusively available under Proteintech Group brand and is not available to purchase from any other manufacturer.

Selected Validation Data



Sandwich ELISA standard curve of MP01373-3, Human LBR Recombinant Matched Antibody Pair - PBS only. 84522-1-PBS was coated to a plate as the capture antibody and incubated with serial dilutions of standard Ag3088. 84522-5-PBS was HRP conjugated as the detection antibody. Range: 0.195-12.5 ng/mL



The mean LBR concentration was determined to be 69.49 ng/mL in K-562 cell extract based on a 2.40 mg/mL extract load, 84.74 ng/mL in Jurkat cell extract based on a 1.50 mg/mL extract load and 200.46 ng/mL in A431 cell extract based on a 1.50 mg/mL extract load.