

FGF19 Recombinant Matched Antibody Pair, PBS Only

Catalog Number:MP01398-1

Capture Antibody Information

Catalog Number: 84536-3-PBS	Clone ID: 241740E4	Conjugate: Unconjugated
Host: Rabbit	Reactivity: human	Full name: fibroblast growth factor 19
Isotype: IgG	GenBank: BC017664	Gene ID: 9965
Purification Method: Protein A purification	Immunogen Catalog Number: HZ-1330	

Detection Antibody Information

Catalog Number: 84536-2-PBS	Clone ID: 241740C12	Conjugate: Unconjugated
Host: Rabbit	Reactivity: human	Full name: fibroblast growth factor 19
Isotype: IgG	GenBank: BC017664	Gene ID: 9965
Purification Method: Protein A purification	Immunogen Catalog Number: HZ-1330	

Applications

Tested Applications: Cytometric bead array, Sandwich ELISA	Range: 0.078-20 ng/mL (Cytometric Bead Array) 31.3-1000 pg/mL (Sandwich ELISA)	Recommended Dilutions: It is recommended that this reagent should be titrated in each testing system to obtain optimal results.
--	---	---

Product Information

MP01398-1 targets FGF19 in immunoassays as a matched antibody pair. Validated in Cytometric bead array, Sandwich ELISA.

Capture antibody: FGF19 Recombinant antibody, PBS Only (Capture) 84536-3-PBS (241740E4). 100 µg. Concentration 1 mg/ml.

Detection antibody: FGF19 Recombinant antibody, PBS Only (Detector) 84536-2-PBS (241740C12). 100 µg. Concentration 1 mg/ml.

Unconjugated rabbit recombinant monoclonal antibody pair in PBS only storage buffer at a concentration of 1 mg/mL, ready for conjugation. Created using Proteintech's proprietary in-house recombinant technology. Recombinant production enables unrivalled batch-to-batch consistency, easy scale-up, and future security of supply.

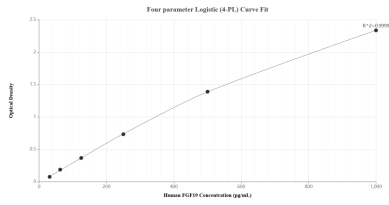
Matched antibody pairs are designed for use in a variety of assays and platforms that require matched antibody pairs.

Antibody use should be optimized for each application and assay.

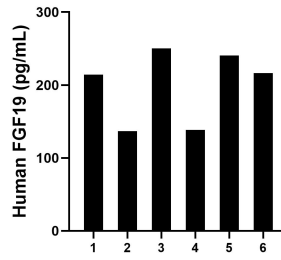
Storage

Storage:
Store at -80°C.
The product is shipped with ice packs. Upon receipt, store it immediately at -80°C
Storage buffer:
PBS only

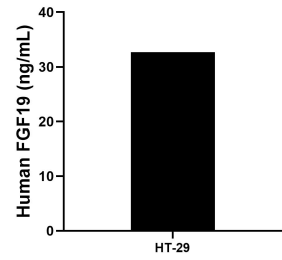
Selected Validation Data



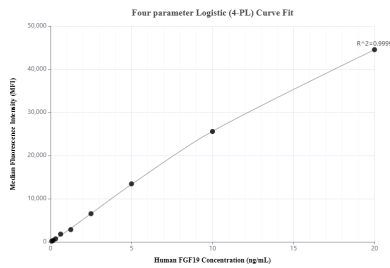
Sandwich ELISA standard curve of MP01398-1, Human FGF19 Recombinant Matched Antibody Pair - PBS only. 84536-3-PBS was coated to a plate as the capture antibody and incubated with serial dilutions of standard HZ-1330. 84536-2-PBS was HRP conjugated as the detection antibody. Range: 31.3-1000 pg/mL.



Serum of six individual healthy human donors was measured. The FGF 19 concentration of detected samples was determined to be 199.4 pg/mL with a range of 136.6-250.1 pg/mL.



HT-29 cells were cultured in DMEM supplemented with 10% fetal bovine serum, 2.5 mM L-glutamine, 100 U/mL penicillin, and 100 µg/mL streptomycin sulfate. An aliquot of the cell culture supernate was removed, assayed for human FGF19, and measured 32.7 ng/mL.



Cytometric bead array standard curve of MP01398-1, FGF19 Recombinant Matched Antibody Pair, PBS Only. Capture antibody: 84536-3-PBS. Detection antibody: 84536-2-PBS. Standard: HZ-1330. Range: 0.078-20 ng/mL.