

For Research Use Only

METTL1 Recombinant Matched Antibody Pair, PBS Only



Catalog Number:MP01400-1

Capture Antibody Information

Catalog Number:

84272-3-PBS

Host:

Rabbit

Isotype:

IgG

Purification Method:

Protein A purification

Clone ID:

241108G4

Reactivity:

human

GenBank:

BC000550

Immunogen Catalog Number:

Ag7055

Conjugate:

Unconjugated

Full name:

methyltransferase like 1

Gene ID:

4234

Detection Antibody Information

Catalog Number:

84272-2-PBS

Host:

Rabbit

Isotype:

IgG

Purification Method:

Protein A purification

Clone ID:

241108F10

Reactivity:

human

GenBank:

BC000550

Immunogen Catalog Number:

Ag7055

Conjugate:

Unconjugated

Full name:

methyltransferase like 1

Gene ID:

4234

Applications

Tested Applications:

Sandwich ELISA

Range:

0.391-25 ng/mL (Sandwich ELISA)

Recommended Dilutions:

It is recommended that this reagent should be titrated in each testing system to obtain optimal results.

Product Information

MP01400-1 targets METTL1 in immunoassays as a matched antibody pair. Validated in Sandwich ELISA.

Capture antibody: METTL1 Recombinant antibody, PBS Only (Capture) 84272-3-PBS (241108G4). 100 μ g. Concentration 1 mg/ml.

Detection antibody: METTL1 Recombinant antibody, PBS Only (Detector) 84272-2-PBS (241108F10). 100 μ g. Concentration 1 mg/ml.

Unconjugated rabbit recombinant monoclonal antibody pair in PBS only storage buffer at a concentration of 1 mg/mL, ready for conjugation. Created using Proteintech's proprietary in-house recombinant technology. Recombinant production enables unrivalled batch-to-batch consistency, easy scale-up, and future security of supply.

Matched antibody pairs are designed for use in a variety of assays and platforms that require matched antibody pairs.

Antibody use should be optimized for each application and assay.

Storage

Storage:

Store at -80°C.

The product is shipped with ice packs. Upon receipt, store it immediately at -80°C

Storage buffer:

PBS only

For technical support and original validation data for this product please contact:

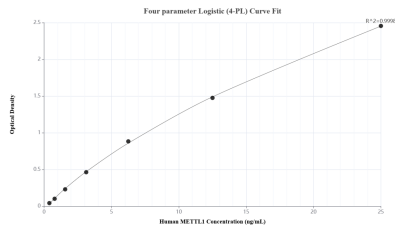
T: 4006900926

E: Proteintech-CN@ptglab.com

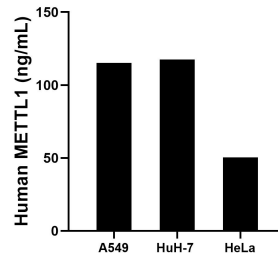
W: ptgcn.com

This product is exclusively available under Proteintech Group brand and is not available to purchase from any other manufacturer.

Selected Validation Data



Sandwich ELISA standard curve of MP01400-1, Human METTL1 Recombinant Matched Antibody Pair - PBS only. 84272-3-PBS was coated to a plate as the capture antibody and incubated with serial dilutions of standard Ag7055. 84272-2-PBS was HRP conjugated as the detection antibody. Range: 0.391-25 ng/mL.



The mean METTL1 concentration was determined to be 115.10 ng/mL in A549 cell extract based on a 2.50 mg/mL extract load, 117.58 ng/mL in Huh-7 cell extract based on a 1.40 mg/mL extract load and 50.30 ng/mL in HeLa cell extract based on a 1.20 mg/mL extract load.