

For Research Use Only

# IL31 Recombinant Matched Antibody Pair, PBS Only



Catalog Number:MP01421-3

## Capture Antibody Information

Catalog Number:

84575-4-PBS

Host:

Rabbit

Isotype:

IgG

Purification Method:

Protein A purification

Clone ID:

241892A6

Reactivity:

human

GenBank:

BC132998

Conjugate:

Unconjugated

Full name:

interleukin 31

Gene ID:

386653

## Detection Antibody Information

Catalog Number:

84575-3-PBS

Host:

Rabbit

Isotype:

IgG

Purification Method:

Protein A purification

Clone ID:

241892G4

Reactivity:

human

GenBank:

BC132998

Conjugate:

Unconjugated

Full name:

interleukin 31

Gene ID:

386653

## Applications

Tested Applications:

Sandwich ELISA

Range:

15.6-1000 pg/mL (Sandwich ELISA)

Recommended Dilutions:

It is recommended that this reagent should be titrated in each testing system to obtain optimal results.

## Product Information

MP01421-3 targets IL31 in immunoassays as a matched antibody pair. Validated in Sandwich ELISA.

Capture antibody: IL31 Recombinant antibody, PBS Only (Capture) 84575-4-PBS (241892A6). 100  $\mu$ g. Concentration 1 mg/ml.

Detection antibody: IL31 Recombinant antibody, PBS Only (Detector) 84575-3-PBS (241892G4). 100  $\mu$ g. Concentration 1 mg/ml.

Unconjugated rabbit recombinant monoclonal antibody pair in PBS only storage buffer at a concentration of 1 mg/mL, ready for conjugation. Created using Proteintech's proprietary in-house recombinant technology. Recombinant production enables unrivalled batch-to-batch consistency, easy scale-up, and future security of supply.

Matched antibody pairs are designed for use in a variety of assays and platforms that require matched antibody pairs.

Antibody use should be optimized for each application and assay.

## Storage

Storage:

Store at -80°C.

The product is shipped with ice packs. Upon receipt, store it immediately at -80°C

Storage buffer:

PBS only

For technical support and original validation data for this product please contact:

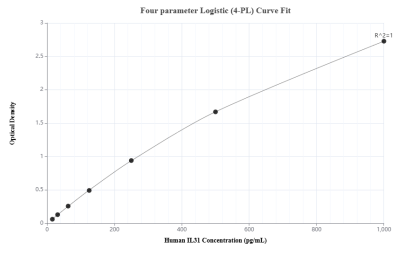
T: 4006900926

E: Proteintech-CN@ptglab.com

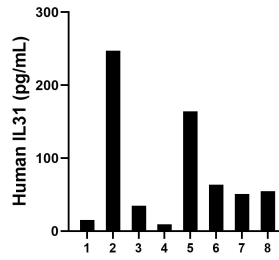
W: ptgcn.com

This product is exclusively available under Proteintech Group brand and is not available to purchase from any other manufacturer.

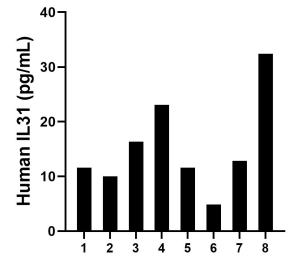
## Selected Validation Data



Sandwich ELISA standard curve of MP01421-3, Human IL31 Recombinant Matched Antibody Pair - PBS only. 84575-4-PBS was coated to a plate as the capture antibody and incubated with serial dilutions of standard Eg2222. 84575-3-PBS was HRP conjugated as the detection antibody. Range: 15.6-1000 pg/mL



Serum of eight individual healthy human donors was measured. The human IL31 concentration of detected samples was determined to be 80.0 pg/mL with a range of 9.3 - 247.5 pg/mL



Plasma of eight individual healthy human donors was measured. The human IL31 concentration of detected samples was determined to be 15.3 pg/mL with a range of 4.8 - 32.4 pg/mL