

For Research Use Only



WNT3A Recombinant Matched Antibody Pair, PBS Only

Catalog Number:MP01423-3

Capture Antibody Information

Catalog Number:
84577-5-PBS
Host:
Rabbit
Isotype:
IgG
Purification Method:
Protein A purification

Clone ID:
241993D6
Reactivity:
human
GenBank:
BC103921
Immunogen Catalog Number:
Ag25051

Conjugate:
Unconjugated
Full name:
wingless-type MMTV integration site family, member 3A
Gene ID:
89780

Detection Antibody Information

Catalog Number:
84577-3-PBS
Host:
Rabbit
Isotype:
IgG
Purification Method:
Protein A purification

Clone ID:
241993G6
Reactivity:
human
GenBank:
BC103921
Immunogen Catalog Number:
Ag25051

Conjugate:
Unconjugated
Full name:
wingless-type MMTV integration site family, member 3A
Gene ID:
89780

Applications

Tested Applications:
Sandwich ELISA

Range:
78.1-5000 pg/mL (Sandwich ELISA)

Recommended Dilutions:
It is recommended that this reagent should be titrated in each testing system to obtain optimal results.

Product Information

MP01423-3 targets WNT3A in immunoassays as a matched antibody pair. Validated in Sandwich ELISA.

Capture antibody: WNT3A Recombinant antibody, PBS Only (Capture) 84577-5-PBS (241993D6). 100 µg. Concentration 1 mg/ml.

Detection antibody: WNT3A Recombinant antibody, PBS Only (Capture/Detector) 84577-3-PBS (241993G6). 100 µg. Concentration 1 mg/ml.

Unconjugated rabbit recombinant monoclonal antibody pair in PBS only storage buffer at a concentration of 1 mg/mL, ready for conjugation. Created using Proteintech's proprietary in-house recombinant technology. Recombinant production enables unrivalled batch-to-batch consistency, easy scale-up, and future security of supply.

Matched antibody pairs are designed for use in a variety of assays and platforms that require matched antibody pairs.

Antibody use should be optimized for each application and assay.

Storage

Storage:
Store at -80°C.
The product is shipped with ice packs. Upon receipt, store it immediately at -80°C
Storage buffer:
PBS only

For technical support and original validation data for this product please contact:

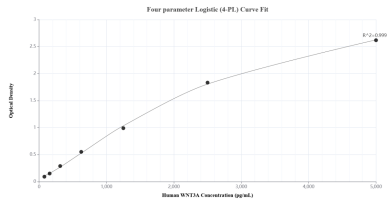
T: 4006900926

E: Proteintech-CN@ptglab.com

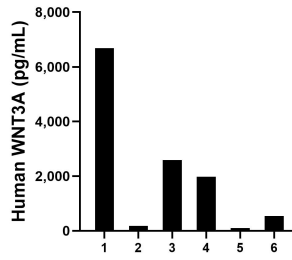
W: ptgcn.com

This product is exclusively available under Proteintech Group brand and is not available to purchase from any other manufacturer.

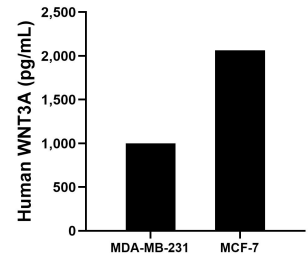
Selected Validation Data



Sandwich ELISA standard curve of MP01423-3, Human WNT3A Recombinant Matched Antibody Pair - PBS only. 84577-5-PBS was coated to a plate as the capture antibody and incubated with serial dilutions of standard Ag25051. 84577-3-PBS was HRP conjugated as the detection antibody. Range: 78.1-5000 pg/mL.



Serum of six individual healthy human donors was measured. The WNT3A concentration of detected samples was determined to be 2,012.8 pg/mL with a range of 101.5-6,680.8 pg/mL.



The mean WNT3A concentration was determined to be 999.1 pg/mL in MDA-MB-231 cell extract based on a 1.2 mg/mL extract load and 2,063.4 pg/mL in MCF-7 cell extract based on a 1.2 mg/mL extract load.