

For Research Use Only

CD26 Recombinant Matched Antibody Pair, PBS Only



Catalog Number:MP01439-3

Capture Antibody Information

Catalog Number:
84606-5-PBS

Host:
Rabbit

Isotype:
IgG

Purification Method:
Protein A purification

Clone ID:
242045D10

Reactivity:
human

GenBank:
BC013329

Conjugate:
Unconjugated

Full name:
dipeptidyl-peptidase 4

Gene ID:
1803

Detection Antibody Information

Catalog Number:
84606-4-PBS

Host:
Rabbit

Isotype:
IgG

Purification Method:
Protein A purification

Clone ID:
242045A5

Reactivity:
human

GenBank:
BC013329

Conjugate:
Unconjugated

Full name:
dipeptidyl-peptidase 4

Gene ID:
1803

Applications

Tested Applications:
Sandwich ELISA

Range:
39.1-2500 pg/mL (Sandwich ELISA)

Recommended Dilutions:
It is recommended that this reagent should be titrated in each testing system to obtain optimal results.

Product Information

MP01439-3 targets CD26 in immunoassays as a matched antibody pair. Validated in Sandwich ELISA.

Capture antibody: DPP4 Recombinant antibody, PBS Only (Capture) 84606-5-PBS (242045D10). 100 µg. Concentration 1 mg/ml.

Detection antibody: DPP4 Recombinant antibody, PBS Only (Detector) 84606-4-PBS (242045A5). 100 µg. Concentration 1 mg/ml.

Unconjugated rabbit recombinant monoclonal antibody pair in PBS only storage buffer at a concentration of 1 mg/mL, ready for conjugation. Created using Proteintech's proprietary in-house recombinant technology. Recombinant production enables unrivalled batch-to-batch consistency, easy scale-up, and future security of supply.

Matched antibody pairs are designed for use in a variety of assays and platforms that require matched antibody pairs.

Antibody use should be optimized for each application and assay.

Storage

Storage:
Store at -80°C.

The product is shipped with ice packs. Upon receipt, store it immediately at -80°C

Storage buffer:
PBS only

For technical support and original validation data for this product please contact:

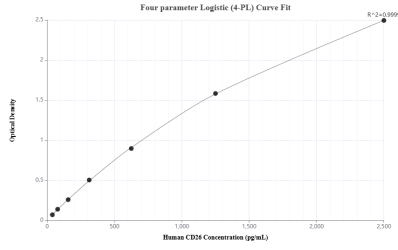
T: 4006900926

E: Proteintech-CN@ptglab.com

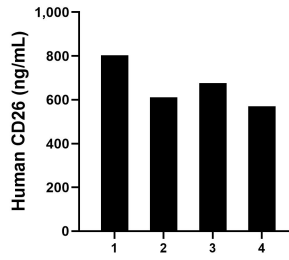
W: ptgcn.com

This product is exclusively available under Proteintech Group brand and is not available to purchase from any other manufacturer.

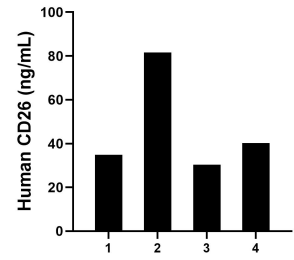
Selected Validation Data



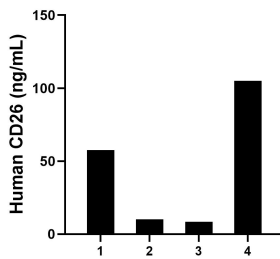
Sandwich ELISA standard curve of MP01439-3, Human CD26 Recombinant Matched Antibody Pair - PBS only. 84606-5-PBS was coated to a plate as the capture antibody and incubated with serial dilutions of standard Eg0157. 84606-4-PBS was HRP conjugated as the detection antibody. Range: 39.1-2500 pg/mL



Serum of four individual healthy human donors was measured. The human CD26 concentration of detected samples was determined to be 665.25 ng/mL with a range of 570.16 - 803.43 ng/mL



Saliva of four individual healthy human donors was measured. The human CD26 concentration of detected samples was determined to be 46.73 ng/mL with a range of 30.36 - 81.55 ng/mL



Urine of four individual healthy human donors was measured. The human CD26 concentration of detected samples was determined to be 45.25 ng/mL with a range of 8.4 - 104.93 ng/mL