

For Research Use Only

# CP110 Recombinant Matched Antibody Pair, PBS Only



Catalog Number:MP01447-3

## Capture Antibody Information

Catalog Number:  
80965-4-PBS

Host:  
Rabbit

Isotype:  
IgG

Purification Method:  
Protein A purification

Clone ID:  
242016H3

Reactivity:  
human

GenBank:  
BC036654

Immunogen Catalog Number:  
Ag3489

Conjugate:  
Unconjugated

Full name:  
CP110 protein

Gene ID:  
9738

## Detection Antibody Information

Catalog Number:  
80965-5-PBS

Host:  
Rabbit

Isotype:  
IgG

Purification Method:  
Protein A purification

Clone ID:  
242016E10

Reactivity:  
human

GenBank:  
BC036654

Immunogen Catalog Number:  
Ag3489

Conjugate:  
Unconjugated

Full name:  
CP110 protein

Gene ID:  
9738

## Applications

Tested Applications:  
Sandwich ELISA

Range:  
0.625-40 ng/mL (Sandwich ELISA)

Recommended Dilutions:  
It is recommended that this reagent should be titrated in each testing system to obtain optimal results.

## Product Information

MP01447-3 targets CP110 in immunoassays as a matched antibody pair. Validated in Sandwich ELISA.

Capture antibody: CP110 Recombinant antibody, PBS Only (Capture) 80965-4-PBS (242016H3). 100 µg. Concentration 1 mg/ml.

Detection antibody: CP110 Recombinant antibody, PBS Only (Detector) 80965-5-PBS (242016E10). 100 µg. Concentration 1 mg/ml.

Unconjugated rabbit recombinant monoclonal antibody pair in PBS only storage buffer at a concentration of 1 mg/mL, ready for conjugation. Created using Proteintech's proprietary in-house recombinant technology. Recombinant production enables unrivalled batch-to-batch consistency, easy scale-up, and future security of supply.

Matched antibody pairs are designed for use in a variety of assays and platforms that require matched antibody pairs.

Antibody use should be optimized for each application and assay.

## Storage

Storage:

Store at -80°C.

The product is shipped with ice packs. Upon receipt, store it immediately at -80°C

Storage buffer:  
PBS only

For technical support and original validation data for this product please contact:

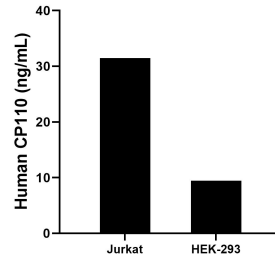
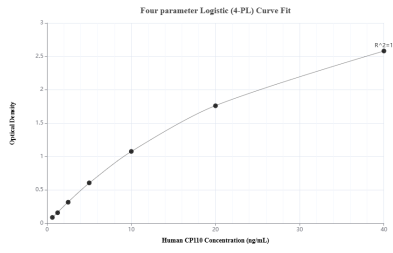
T: 4006900926

E: Proteintech-CN@ptglab.com

W: ptgcn.com

This product is exclusively available under Proteintech Group brand and is not available to purchase from any other manufacturer.

## Selected Validation Data



Sandwich ELISA standard curve of MP01447-3, Human CP110 Recombinant Matched Antibody Pair - PBS only. 80965-4-PBS was coated to a plate as the capture antibody and incubated with serial dilutions of standard Ag3489. 80965-5-PBS was HRP conjugated as the detection antibody. Range: 0.625-40 ng/mL

The mean CP110 concentration was determined to be 31.64 ng/mL in Jurkat cell extract based on a 4.2 mg/mL extract load and 9.42 ng/mL in HEK-293 cell extract based on a 1.2 mg/mL extract load.