

RXRB Recombinant Matched Antibody Pair, PBS Only

Catalog Number: MP01484-2

Capture Antibody Information

Catalog Number: 84656-2-PBS	Clone ID: 242178D6	Conjugate: Unconjugated
Host: Rabbit	Reactivity: human	Full name: retinoid X receptor, beta
Isotype: IgG	GenBank: BC001167	Gene ID: 6257
Purification Method: Protein A purification	Immunogen Catalog Number: Ag0263	

Detection Antibody Information

Catalog Number: 84656-1-PBS	Clone ID: 242178A5	Conjugate: Unconjugated
Host: Rabbit	Reactivity: human	Full name: retinoid X receptor, beta
Isotype: IgG	GenBank: BC001167	Gene ID: 6257
Purification Method: Protein A purification	Immunogen Catalog Number: Ag0263	

Applications

Tested Applications: Cytometric bead array, Sandwich ELISA	Range: 0.313-40 ng/mL (Cytometric Bead Array) 1.56-100 ng/mL (Sandwich ELISA)	Recommended Dilutions: It is recommended that this reagent should be titrated in each testing system to obtain optimal results.
--	--	---

Product Information

MP01484-2 targets RXRB in immunoassays as a matched antibody pair. Validated in Cytometric bead array, Sandwich ELISA.

Capture antibody: RXRB Recombinant antibody, PBS Only (Capture/Detector) 84656-2-PBS (242178D6). 100 µg. Concentration 1 mg/ml.

Detection antibody: RXRB Recombinant antibody, PBS Only (Detector) 84656-1-PBS (242178A5). 100 µg. Concentration 1 mg/ml.

Unconjugated rabbit recombinant monoclonal antibody pair in PBS only storage buffer at a concentration of 1 mg/mL, ready for conjugation. Created using Proteintech's proprietary in-house recombinant technology. Recombinant production enables unrivalled batch-to-batch consistency, easy scale-up, and future security of supply.

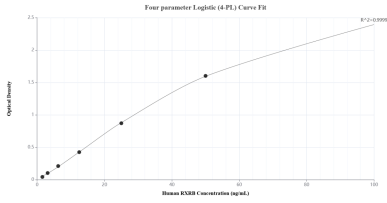
Matched antibody pairs are designed for use in a variety of assays and platforms that require matched antibody pairs.

Antibody use should be optimized for each application and assay.

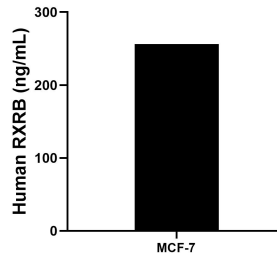
Storage

Storage:
Store at -80°C.
The product is shipped with ice packs. Upon receipt, store it immediately at -80°C
Storage buffer:
PBS only

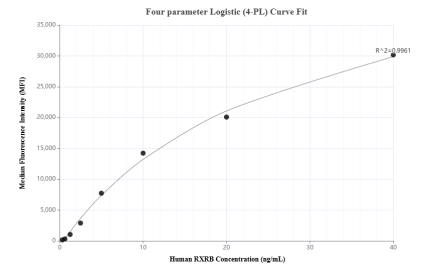
Selected Validation Data



Sandwich ELISA standard curve of MP01484-2, Human RXRB Recombinant Matched Antibody Pair - PBS only. 84656-2-PBS was coated to a plate as the capture antibody and incubated with serial dilutions of standard Ag0263. 84656-1-PBS was HRP conjugated as the detection antibody. Range: 1.56-100 ng/mL



The mean RXRB concentration was determined to be 256.21 ng/mL in MCF-7 cell extract based on a 1.20 mg/mL extract load.



Cytometric bead array standard curve of MP01484-2, RXRB Recombinant Matched Antibody Pair, PBS Only. Capture antibody: 84656-2-PBS. Detection antibody: 84656-1-PBS. Standard: Ag0263. Range: 0.313-40 ng/mL