

For Research Use Only

Siglec-9 Recombinant Matched Antibody Pair, PBS Only



Catalog Number:MP01502-3

Capture Antibody Information

Catalog Number:
84683-1-PBS

Host:
Rabbit

Isotype:
IgG

Purification Method:
Protein A purification

Clone ID:
241799C8

Reactivity:
human

GenBank:
NM_014441.3

Conjugate:
Unconjugated

Full name:
sialic acid binding Ig-like lectin 9

Gene ID:
27180

Detection Antibody Information

Catalog Number:
84683-5-PBS

Host:
Rabbit

Isotype:
IgG

Purification Method:
Protein A purification

Clone ID:
241799F2

Reactivity:
human

GenBank:
NM_014441.3

Conjugate:
Unconjugated

Full name:
sialic acid binding Ig-like lectin 9

Gene ID:
27180

Applications

Tested Applications:
Sandwich ELISA

Range:
0.156-10 ng/mL (Sandwich ELISA)

Recommended Dilutions:
It is recommended that this reagent should be titrated in each testing system to obtain optimal results.

Product Information

MP01502-3 targets Siglec-9 in immunoassays as a matched antibody pair. Validated in Sandwich ELISA.

Capture antibody: Siglec-9 Recombinant antibody, PBS Only (Capture/Detector) 84683-1-PBS (241799C8). 100 μ g. Concentration 1 mg/mL.

Detection antibody: Siglec-9 Recombinant antibody, PBS Only (Detector) 84683-5-PBS (241799F2). 100 μ g. Concentration 1 mg/mL.

Unconjugated rabbit recombinant monoclonal antibody pair in PBS only storage buffer at a concentration of 1 mg/mL, ready for conjugation. Created using Proteintech's proprietary in-house recombinant technology. Recombinant production enables unrivalled batch-to-batch consistency, easy scale-up, and future security of supply.

Matched antibody pairs are designed for use in a variety of assays and platforms that require matched antibody pairs.

Antibody use should be optimized for each application and assay.

Storage

Storage:
Store at -80°C.

The product is shipped with ice packs. Upon receipt, store it immediately at -80°C

Storage buffer:
PBS only

For technical support and original validation data for this product please contact:

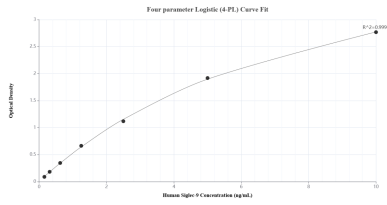
T: 4006900926

E: Proteintech-CN@ptglab.com

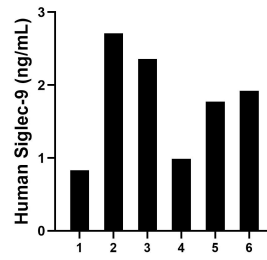
W: ptgcn.com

This product is exclusively available under Proteintech Group brand and is not available to purchase from any other manufacturer.

Selected Validation Data



Sandwich ELISA standard curve of MP01502-3, Human Siglec-9 Recombinant Matched Antibody Pair - PBS only. 84683-1-PBS was coated to a plate as the capture antibody and incubated with serial dilutions of standard Eg1084. 84683-5-PBS was HRP conjugated as the detection antibody. Range: 0.156-10 ng/mL



Serum of six individual healthy human donors was measured. The Siglec-9 concentration of detected samples was determined to be 1.76 ng/mL with a range of 0.83-2.71 ng/mL.