

# PER1 Recombinant Matched Antibody Pair, PBS Only

Catalog Number: MP01530-1

## Capture Antibody Information

**Catalog Number:**  
84730-1-PBS  
**Host:**  
Rabbit  
**Isotype:**  
IgG  
**Purification Method:**  
Protein A purification

**Clone ID:**  
242096A4  
**Reactivity:**  
human  
**GenBank:**  
BC028207  
**Immunogen Catalog Number:**  
Ag4249

**Conjugate:**  
Unconjugated  
**Full name:**  
period homolog 1 (Drosophila)  
**Gene ID:**  
5187

## Detection Antibody Information

**Catalog Number:**  
84730-3-PBS  
**Host:**  
Rabbit  
**Isotype:**  
IgG  
**Purification Method:**  
Protein A purification

**Clone ID:**  
242096F8  
**Reactivity:**  
human  
**GenBank:**  
BC028207  
**Immunogen Catalog Number:**  
Ag4249

**Conjugate:**  
Unconjugated  
**Full name:**  
period homolog 1 (Drosophila)  
**Gene ID:**  
5187

## Applications

**Tested Applications:**  
Cytometric bead array, Sandwich ELISA

**Range:**  
0.313-40 ng/mL (Cytometric Bead Array)  
156-5000 pg/mL (Sandwich ELISA)

**Recommended Dilutions:**  
It is recommended that this reagent should be titrated in each testing system to obtain optimal results.

## Product Information

MP01530-1 targets PER1 in immunoassays as a matched antibody pair. Validated in Cytometric bead array, Sandwich ELISA.

Capture antibody: PER1 Recombinant antibody, PBS Only (Capture) 84730-1-PBS (242096A4). 100 µg. Concentration 1 mg/mL.

Detection antibody: PER1 Recombinant antibody, PBS Only (Detector) 84730-3-PBS (242096F8). 100 µg. Concentration 1 mg/mL.

Unconjugated rabbit recombinant monoclonal antibody pair in PBS only storage buffer at a concentration of 1 mg/mL, ready for conjugation. Created using Proteintech's proprietary in-house recombinant technology. Recombinant production enables unrivalled batch-to-batch consistency, easy scale-up, and future security of supply.

Matched antibody pairs are designed for use in a variety of assays and platforms that require matched antibody pairs.

Antibody use should be optimized for each application and assay.

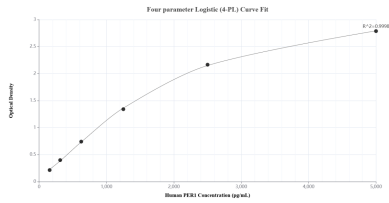
## Storage

**Storage:**  
Store at -80°C.

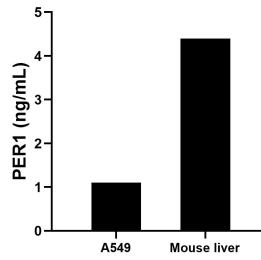
**The product is shipped with ice packs. Upon receipt, store it immediately at -80°C**

**Storage buffer:**  
PBS only

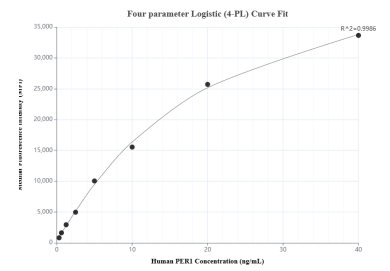
## Selected Validation Data



Sandwich ELISA standard curve of MP01530-1, Human PER1 Recombinant Matched Antibody Pair - PBS only. 84730-1-PBS was coated to a plate as the capture antibody and incubated with serial dilutions of standard Ag4249. 84730-3-PBS was HRP conjugated as the detection antibody. Range: 156-5000 pg/mL



The mean PER1 concentration was determined to be 1.1 ng/mL in A549 cell extract based on a 2.3 mg/mL extract load and 4.4 ng/mL in mouse liver cell extract based on a 3.7 mg/mL extract load.



Cytometric bead array standard curve of MP01530-1, PER1 Recombinant Matched Antibody Pair, PBS Only. Capture antibody: 84730-1-PBS. Detection antibody: 84730-3-PBS. Standard: Ag4249. Range: 0.313-40 ng/mL