

# Rat IGF1 Recombinant Matched Antibody Pair, PBS Only

Catalog Number: **MP01547-3**

## Capture Antibody Information

<b>Catalog Number:</b> 84782-6-PBS	<b>Clone ID:</b> 241890G4	<b>Conjugate:</b> Unconjugated
<b>Host:</b> Rabbit	<b>Reactivity:</b> rat	<b>Full name:</b> insulin-like growth factor 1
<b>Isotype:</b> IgG	<b>GenBank:</b> AAA41386	<b>Gene ID:</b> 24482
<b>Purification Method:</b> Protein A purification	<b>Immunogen Catalog Number:</b> Eg1976	

## Detection Antibody Information

<b>Catalog Number:</b> 84782-1-PBS	<b>Clone ID:</b> 241890A11	<b>Conjugate:</b> Unconjugated
<b>Host:</b> Rabbit	<b>Reactivity:</b> rat	<b>Full name:</b> insulin-like growth factor 1
<b>Isotype:</b> IgG	<b>GenBank:</b> AAA41386	<b>Gene ID:</b> 24482
<b>Purification Method:</b> Protein A purification	<b>Immunogen Catalog Number:</b> Eg1976	

## Applications

<b>Tested Applications:</b> Sandwich ELISA	<b>Range:</b> 3.91-250 pg/mL (Sandwich ELISA)	<b>Recommended Dilutions:</b> It is recommended that this reagent should be titrated in each testing system to obtain optimal results.
---	--	---

## Product Information

MP01547-3 targets IGF1 in immunoassays as a matched antibody pair. Validated in Sandwich ELISA.

Capture antibody: Rat IGF1 Recombinant antibody, PBS Only (Capture) 84782-6-PBS (241890G4). 100 µg. Concentration 1 mg/mL.

Detection antibody: Rat IGF1 Recombinant antibody, PBS Only (Detector) 84782-1-PBS (241890A11). 100 µg. Concentration 1 mg/mL.

Unconjugated rabbit recombinant monoclonal antibody pair in PBS only storage buffer at a concentration of 1 mg/mL, ready for conjugation. Created using Proteintech's proprietary in-house recombinant technology. Recombinant production enables unrivalled batch-to-batch consistency, easy scale-up, and future security of supply.

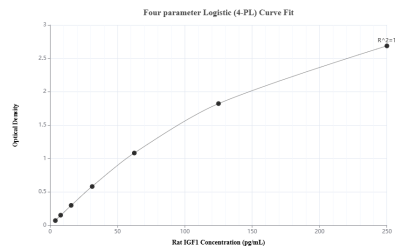
Matched antibody pairs are designed for use in a variety of assays and platforms that require matched antibody pairs.

Antibody use should be optimized for each application and assay.

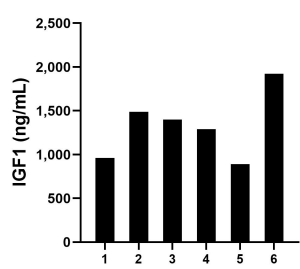
## Storage

**Storage:**  
Store at -80°C.  
**The product is shipped with ice packs. Upon receipt, store it immediately at -80°C**  
**Storage buffer:**  
PBS only

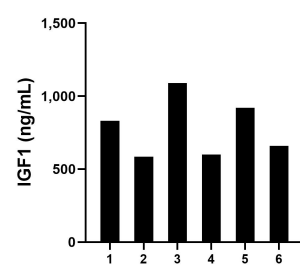
Selected Validation Data



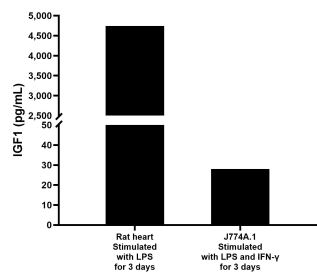
Sandwich ELISA standard curve of MP01547-3, Rat IGF1 Recombinant Matched Antibody Pair - PBS only. 84782-6-PBS was coated to a plate as the capture antibody and incubated with serial dilutions of standard Eg1976. 84782-1-PBS was HRP conjugated as the detection antibody. Range: 3.91-250 pg/mL



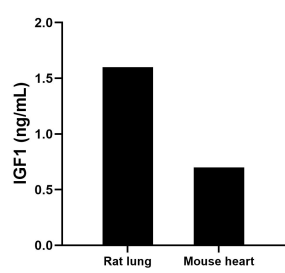
Serum of six rats was measured. The IGF1 concentration of detected samples was determined to be 1,325.1 pg/mL with a range of 892.6 - 1,922.3 ng/mL



Serum of six mice was measured. The IGF1 concentration of detected samples was determined to be 780.6 pg/mL with a range of 585.0 - 1,089.6 ng/mL



Rat heart tissue (chopped in 1-2 mm pieces in 30 mL of medium) was cultured for 3 days in RPMI supplemented with 10% fetal calf serum and 50 μM β-mercaptoethanol and stimulated with 2.5 ng/mL LPS. J774A.1 cells (1 x 10<sup>6</sup> cells/mL) were cultured in DMEM supplemented with 10% fetal bovine serum, 20 ng/mL IFN-γ, and 1.0 μg/mL LPS for 3 days. Aliquots of the cell culture supernates were removed, assayed for levels of IGF1, and measured 4,740.2 pg/mL in rat heart cell



Rat lung tissue and mouse heart tissue were rinsed with 1X PBS to remove excess blood, homogenized in 20 mL of 1X PBS and stored overnight at ≤ -20 °C. Homogenates were thawed and centrifuged for 5 minutes at 5000 x g. Homogenates were assayed for IGF1 and measured 1.6 ng/mL in rat lung tissue homogenate based on a 0.3 mg/mL homogenate load, and 0.7 ng/mL in mouse heart tissue homogenate based on a 1.4 mg/mL homogenate load.