

KLRG1 Recombinant Matched Antibody Pair, PBS Only

Catalog Number:MP01549-1

Capture Antibody Information

Catalog Number:
84785-3-PBS
Host:
Rabbit
Isotype:
IgG
Purification Method:
Protein A purification

Clone ID:
242327E7
Reactivity:
human
GenBank:
NM_005810.4

Conjugate:
Unconjugated
Full name:
killer cell lectin-like receptor subfamily G, member 1
Gene ID:
10219

Detection Antibody Information

Catalog Number:
84785-1-PBS
Host:
Rabbit
Isotype:
IgG
Purification Method:
Protein A purification

Clone ID:
242327D10
Reactivity:
human
GenBank:
NM_005810.4

Conjugate:
Unconjugated
Full name:
killer cell lectin-like receptor subfamily G, member 1
Gene ID:
10219

Applications

Tested Applications:
Cytometric bead array

Range:
0.313-40 ng/mL (Cytometric Bead Array)

Recommended Dilutions:
It is recommended that this reagent should be titrated in each testing system to obtain optimal results.

Product Information

MP01549-1 targets KLRG1 in immunoassays as a matched antibody pair. Validated in Cytometric bead array.

Capture antibody: KLRG1 Recombinant antibody, PBS Only (Capture) 84785-3-PBS (242327E7). 100 µg. Concentration 1 mg/ml.

Detection antibody: KLRG1 Recombinant antibody, PBS Only (Detector) 84785-1-PBS (242327D10). 100 µg. Concentration 1 mg/ml.

Alternative KLRG1 matched antibody pairs: MP01549-2

Unconjugated rabbit recombinant monoclonal antibody pair in PBS only storage buffer at a concentration of 1 mg/mL, ready for conjugation. Created using Proteintech's proprietary in-house recombinant technology. Recombinant production enables unrivalled batch-to-batch consistency, easy scale-up, and future security of supply.

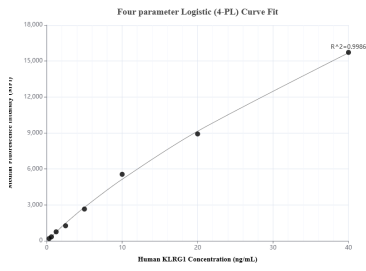
Matched antibody pairs are designed for use in a variety of assays and platforms that require matched antibody pairs.

Antibody use should be optimized for each application and assay.

Storage

Storage:
Store at -80°C.
The product is shipped with ice packs. Upon receipt, store it immediately at -80°C
Storage buffer:
PBS only

Selected Validation Data



Cytometric bead array standard curve of MP01549-1, KLRG1 Recombinant Matched Antibody Pair, PBS Only. Capture antibody: 84785-3-PBS. Detection antibody: 84785-1-PBS. Standard: Eg2036. Range: 0.313-40 ng/mL