

For Research Use Only

APOE Recombinant Matched Antibody Pair, PBS Only



Catalog Number:MP01558-3

Capture Antibody Information

Catalog Number:
84775-5-PBS

Host:
Rabbit

Isotype:
IgG

Purification Method:
Protein A purification

Clone ID:
242310B5

Reactivity:
human

GenBank:
BC003557

Conjugate:
Unconjugated

Full name:
Apolipoprotein E

Gene ID:
348

Detection Antibody Information

Catalog Number:
84775-4-PBS

Host:
Rabbit

Isotype:
IgG

Purification Method:
Protein A purification

Clone ID:
242310A3

Reactivity:
human

GenBank:
BC003557

Conjugate:
Unconjugated

Full name:
Apolipoprotein E

Gene ID:
348

Applications

Tested Applications:
Sandwich ELISA

Range:
0.313-10 ng/mL (Sandwich ELISA)

Recommended Dilutions:
It is recommended that this reagent should be titrated in each testing system to obtain optimal results.

Product Information

MP01558-3 targets APOE in immunoassays as a matched antibody pair. Validated in Sandwich ELISA.

Capture antibody: APOE Recombinant antibody, PBS Only (Capture) 84775-5-PBS (242310B5). 100 µg. Concentration 1 mg/ml.

Detection antibody: APOE Recombinant antibody, PBS Only (Detector) 84775-4-PBS (242310A3). 100 µg. Concentration 1 mg/ml.

Unconjugated rabbit recombinant monoclonal antibody pair in PBS only storage buffer at a concentration of 1 mg/mL, ready for conjugation. Created using Proteintech's proprietary in-house recombinant technology. Recombinant production enables unrivalled batch-to-batch consistency, easy scale-up, and future security of supply.

Matched antibody pairs are designed for use in a variety of assays and platforms that require matched antibody pairs.

Antibody use should be optimized for each application and assay.

Storage

Storage:
Store at -80°C.

The product is shipped with ice packs. Upon receipt, store it immediately at -80°C

Storage buffer:
PBS only

For technical support and original validation data for this product please contact:

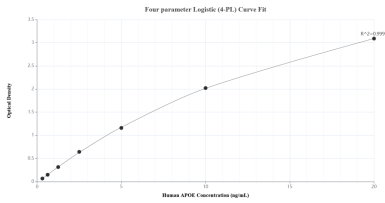
T: 4006900926

E: Proteintech-CN@ptglab.com

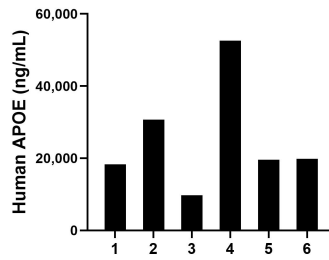
W: ptgcn.com

This product is exclusively available under Proteintech Group brand and is not available to purchase from any other manufacturer.

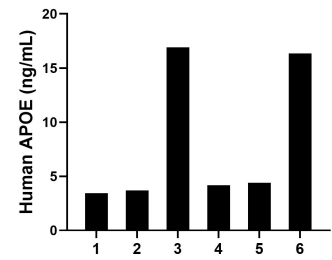
Selected Validation Data



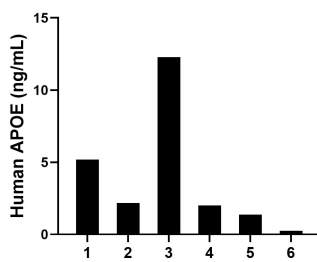
Sandwich ELISA standard curve of MP01558-3, Human APOE Recombinant Matched Antibody Pair - PBS only. 84775-5-PBS was coated to a plate as the capture antibody and incubated with serial dilutions of standard Eg0448. 84775-4-PBS was HRP conjugated as the detection antibody. Range: 0.313-10 ng/mL



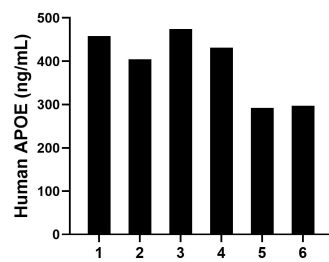
Serum of six individual healthy human donors was measured. The APOE concentration of detected samples was determined to be 25,140.92 ng/mL with a range of 9,706.32-52,603.90 ng/mL



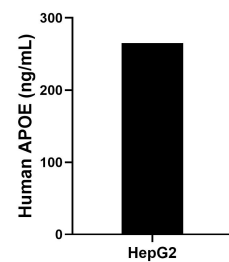
Saliva of six individual healthy human donors was measured. The APOE concentration of detected samples was determined to be 8.16 ng/mL with a range of 3.43-16.91 ng/mL



Urine of six individual healthy human donors was measured. The APOE concentration of detected samples was determined to be 3.88 ng/mL with a range of 0.26-12.28 ng/mL



Human milk of six individual healthy human donors was measured. The APOE concentration of detected samples was determined to be 392.90 ng/mL with a range of 291.94-474.33 ng/mL



HepG2 were cultured in DMEM supplemented with 10% fetal bovine serum, 2.5 mM L-glutamine, 100 U/mL penicillin, and 100 μ g/mL streptomycin sulfate. An aliquot of the cell culture supernatant was removed, assayed for human APOE, and measured 264.90 ng/mL