

For Research Use Only

RB1CC1 Recombinant Matched Antibody Pair, PBS Only



Catalog Number:MP01563-1

Capture Antibody Information

Catalog Number:
84757-2-PBS

Host:
Rabbit

Isotype:
IgG

Purification Method:
Protein A purification

Clone ID:
242204D8

Reactivity:
human

GenBank:
BC017556

Immunogen Catalog Number:
Ag10508

Conjugate:
Unconjugated

Full name:
RB1-inducible coiled-coil 1

Gene ID:
9821

Detection Antibody Information

Catalog Number:
84757-1-PBS

Host:
Rabbit

Isotype:
IgG

Purification Method:
Protein A purification

Clone ID:
242204A12

Reactivity:
human

GenBank:
BC017556

Immunogen Catalog Number:
Ag10508

Conjugate:
Unconjugated

Full name:
RB1-inducible coiled-coil 1

Gene ID:
9821

Applications

Tested Applications:
Cytometric bead array, Sandwich ELISA

Range:
3.125-100 ng/mL (Cytometric Bead Array)
78.1-5000 pg/mL (Sandwich ELISA)

Recommended Dilutions:
It is recommended that this reagent should be titrated in each testing system to obtain optimal results.

Product Information

MP01563-1 targets RB1CC1 in immunoassays as a matched antibody pair. Validated in Cytometric bead array, Sandwich ELISA.

Capture antibody: RB1CC1 Recombinant antibody, PBS Only (Capture) 84757-2-PBS (242204D8). 100 µg. Concentration 1 mg/ml.

Detection antibody: RB1CC1 Recombinant antibody, PBS Only (Detector) 84757-1-PBS (242204A12). 100 µg. Concentration 1 mg/ml.

Unconjugated rabbit recombinant monoclonal antibody pair in PBS only storage buffer at a concentration of 1 mg/mL, ready for conjugation. Created using Proteintech's proprietary in-house recombinant technology. Recombinant production enables unrivalled batch-to-batch consistency, easy scale-up, and future security of supply.

Matched antibody pairs are designed for use in a variety of assays and platforms that require matched antibody pairs.

Antibody use should be optimized for each application and assay.

Storage

Storage:
Store at -80°C.

The product is shipped with ice packs. Upon receipt, store it immediately at -80°C

Storage buffer:
PBS only

For technical support and original validation data for this product please contact:

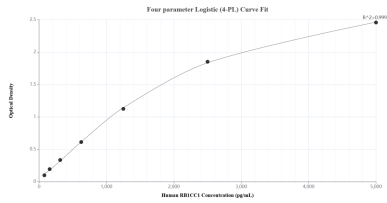
T: 4006900926

E: Proteintech-CN@ptglab.com

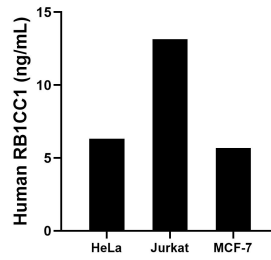
W: ptgcn.com

This product is exclusively available under Proteintech Group brand and is not available to purchase from any other manufacturer.

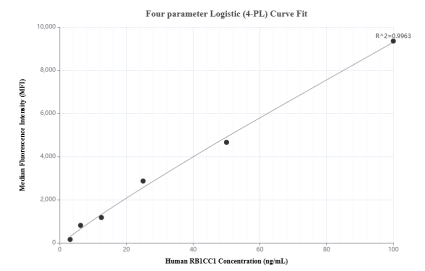
Selected Validation Data



Sandwich ELISA standard curve of MP01563-1, Human RB1CC1 Recombinant Matched Antibody Pair - PBS only. 84757-2-PBS was coated to a plate as the capture antibody and incubated with serial dilutions of standard Ag10508. 84757-1-PBS was HRP conjugated as the detection antibody. Range: 78.1-5000 pg/mL



The mean RB1CC1 concentration was determined to be 6.3 ng/mL in HeLa cell extract based on a 1.0 mg/mL extract load, 13.2 ng/mL in Jurkat cell extract based on a 1.5 mg/mL extract load and 5.7 ng/mL in MCF-7 cell extract based on a 1.2 mg/mL extract load.



Cytometric bead array standard curve of MP01563-1, RB1CC1 Recombinant Matched Antibody Pair, PBS Only. Capture antibody: 84757-2-PBS. Detection antibody: 84757-1-PBS. Standard: Ag10508. Range: 3.125-100 ng/mL