

For Research Use Only

PSMD14/POH1 Recombinant Matched Antibody Pair, PBS Only



Catalog Number:MP01566-3

Capture Antibody Information

Catalog Number:
84767-1-PBS
Host:
Rabbit
Isotype:
IgG
Purification Method:
Protein A purification

Clone ID:
242160C12
Reactivity:
human
GenBank:
BC009524
Immunogen Catalog Number:
Ag2694

Conjugate:
Unconjugated
Full name:
proteasome (prosome, macropain)
26S subunit, non-ATPase, 14
Gene ID:
10213

Detection Antibody Information

Catalog Number:
84767-3-PBS
Host:
Rabbit
Isotype:
IgG
Purification Method:
Protein A purification

Clone ID:
242160E7
Reactivity:
human
GenBank:
BC009524
Immunogen Catalog Number:
Ag2694

Conjugate:
Unconjugated
Full name:
proteasome (prosome, macropain)
26S subunit, non-ATPase, 14
Gene ID:
10213

Applications

Tested Applications:
Sandwich ELISA

Range:
78.1-5000 pg/mL (Sandwich ELISA)

Recommended Dilutions:
It is recommended that this reagent should be titrated in each testing system to obtain optimal results.

Product Information

MP01566-3 targets PSMD14/POH1 in immunoassays as a matched antibody pair. Validated in Sandwich ELISA.

Capture antibody: PSMD14/POH1 Recombinant antibody, PBS Only (Capture/Detector) 84767-1-PBS (242160C12).
100 µg. Concentration 1 mg/ml.

Detection antibody: PSMD14/POH1 Recombinant antibody, PBS Only (Capture/Detector) 84767-3-PBS (242160E7).
100 µg. Concentration 1 mg/ml.

Unconjugated rabbit recombinant monoclonal antibody pair in PBS only storage buffer at a concentration of 1 mg/mL, ready for conjugation. Created using Proteintech's proprietary in-house recombinant technology. Recombinant production enables unrivalled batch-to-batch consistency, easy scale-up, and future security of supply.

Matched antibody pairs are designed for use in a variety of assays and platforms that require matched antibody pairs.

Antibody use should be optimized for each application and assay.

Storage

Storage:
Store at -80°C.
The product is shipped with ice packs. Upon receipt, store it immediately at -80°C
Storage buffer:
PBS only

For technical support and original validation data for this product please contact:

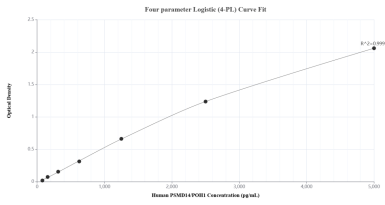
T: 4006900926

E: Proteintech-CN@ptglab.com

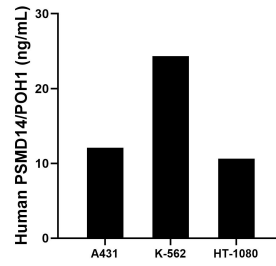
W: ptgcn.com

This product is exclusively available under Proteintech Group brand and is not available to purchase from any other manufacturer.

Selected Validation Data



Sandwich ELISA standard curve of MP01566-3, Human PSMD14/POH1 Recombinant Matched Antibody Pair - PBS only. 84767-1-PBS was coated to a plate as the capture antibody and incubated with serial dilutions of standard Ag2694. 84767-3-PBS was HRP conjugated as the detection antibody. Range: 78.1-5000 pg/mL



The mean PSMD14/POH1 concentration was determined to be 12.08 ng/mL in A431 cell extract based on a 1.30 mg/mL extract load, 24.32 ng/mL in K-562 cell extract based on a 2.40 mg/mL extract load and 10.64 ng/mL in HT-1080 cell extract based on a 1.40 mg/mL extract load.